

December 12, 2018

WHEREAS, the City Charter provides for the Park and Recreation Board to grant contracts and agreements within park facilities with such terms and conditions as it shall deem proper; and

WHEREAS, the City of Dallas Park and Recreation Department (City) and Lincoln LAG LTD. (Lincoln) and HEB Grocery Company, LP (HEB) desire to enter into a development and maintenance agreement for the purpose of constructing the Matilda Trail, an enhanced sidewalk, hike and bike trail, and appurtenances located at East Lovers Lane and Matilda Street as shown in Exhibit A; and

WHEREAS, the alignment of the Matilda Trail, identified in the 2008 Dallas Trail Network Plan, is an important connection to the University Crossing Trail and construction of the trail will serve many residents as an alternative transportation option; and

WHEREAS, upon completion of the Matilda Trail, Lincoln and HEB shall pay an endowment in an amount not to exceed \$30,000.00 for maintenance of the trail until the beginning of the fiscal year in which the trail is accepted by the City; and

WHEREAS, the City desires to have Lincoln and HEB provide development and maintenance of such improvements for the use and enjoyment of all City of Dallas citizens.

Now, Therefore,

BE IT RESOLVED BY THE CITY COUNCIL OF THE CITY OF DALLAS:

SECTION 1. That the City Manager is hereby authorized to sign a development and maintenance agreement with Lincoln LAG LTD. and HEB Grocery Company, LP, approved as to form by the City Attorney, for the purpose of constructing the Matilda Trail, an enhanced sidewalk, hike and bike trail, and appurtenances located at East Lovers Lane and Matilda Street.

SECTION 2. That the President of the Park and Recreation Board and the City Manager are hereby authorized to execute a development and maintenance agreement with Lincoln LAG LTD. and HEB Grocery Company, LP, approved as to form by the City Attorney.

SECTION 3. That the duration of the agreement shall be from execution of the agreement to completion and acceptance of the trail by the City and payment to the City by Lincoln/HEB in an amount not to exceed \$30,000.00 into a maintenance endowment fund.

181838

December 12, 2018

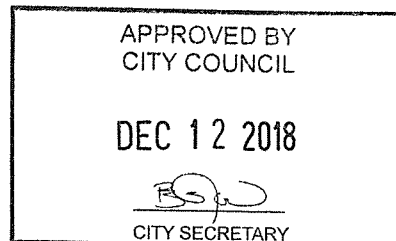
SECTION 4. That the Chief Financial Officer is hereby authorized to receive and deposit endowment funds from Lincoln and HEB in an amount not to exceed of \$30,000.00 in the Mowmentum Park Improvement Fund, Fund 0T80, Department PKR, Unit T110, Revenue Code 8411.

SECTION 5. That the City Manager is hereby authorized to establish appropriations in an amount not to exceed \$30,000.00 in the Mowmentum Park Improvement Fund, Fund 0T80, Department PKR, Unit T110, Object 3099.

SECTION 6. That the Chief Financial Officer is hereby authorized to disburse endowment funds in an amount not to exceed \$30,000.00 from the Mowmentum Park Improvement Fund, Fund 0T80, Department PKR, Unit T110, Object 3099, in accordance with the terms and conditions of the development and maintenance agreement.

SECTION 7. That this contract is designated as Contract No. PKR-2019-00008233.

SECTION 8. That this resolution shall take effect immediately from and after its passage in accordance with the provisions of the Charter of the City of Dallas, and it is accordingly so resolved.



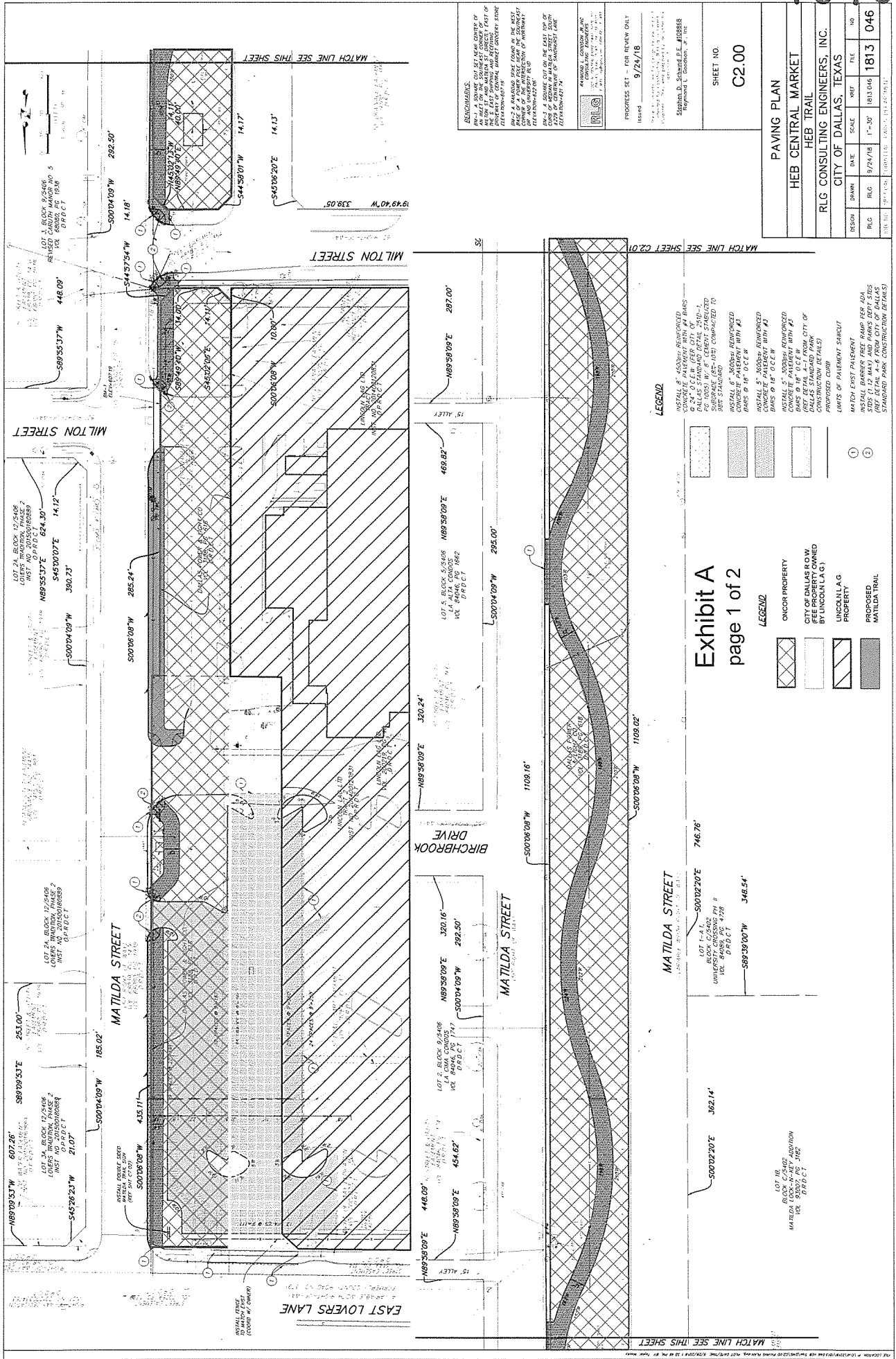


Exhibit A page 1 of 2

LEGEND

- INSTALL 8" 4500Psi REINFORCED CONCRETE PAVEMENT WITH #4 BARS TO DALLAS STANDARD DETAIL 2410-1, 1.00' WIDE, UNLESS OTHERWISE SHOWN TO BE OTHERWISE COMPARED TO DETAIL 2410-1.
 - INSTALL 6" 3000Psi REINFORCED CONCRETE PAVEMENT WITH #4 BARS 8' R/O C/E/W UNLESS OTHERWISE SHOWN TO BE OTHERWISE COMPARED TO DETAIL 2410-1.
 - INSTALL 5" 3000Psi REINFORCED CONCRETE PAVEMENT WITH #4 BARS 8' R/O C/E/W UNLESS OTHERWISE SHOWN TO BE OTHERWISE COMPARED TO DETAIL 2410-1.
 - INSTALL 4" 3000Psi REINFORCED CONCRETE PAVEMENT WITH #4 BARS 8' R/O C/E/W UNLESS OTHERWISE SHOWN TO BE OTHERWISE COMPARED TO DETAIL 2410-1.
- LIMITS OF PAVEMENT SHOWN/NOT SHOWN PER JCA PER DETAIL A-6 FROM CITY OF DALLAS STANDARD PAVING CONSTRUCTION DETAILS

LEGEND

- ONCOR PROPERTY
- CITY OF DALLAS ROW BY LINCOLN LAG
- UNINCORPORATED PROPERTY
- PROPOSED MATILDA TRAIL

PAVING PLAN			
HEB TRAIL			
HEB TRAIL			
RLG CONSULTING ENGINEERS, INC.			
CITY OF DALLAS, TEXAS			
REVISION	DATE	SCALE	BY
RLG	9/24/18	1"=30'	1813
CHECKED BY	DATE	FILE	NO
			046

PROGRESS SET FOR REVIEW ONLY
ISSUED 9/24/18

STEPHEN D. SHAW, D.E., #108868
RAYMOND L. GUNDEL, P.E.

STEPHEN D. SHAW & ASSOCIATES, P.C.
1200 WEST BIRCH STREET, SUITE 400
DALLAS, TEXAS 75203

REVISIONS:

- REV-1 A DOUBLE CUT ON THE EAST TOP OF LOT 34, BLOCK 12, 5408 LOVERS WALK, PHASE 2, PROJECT NO. 2015003882.
- REV-2 A PARALLEL LINE FOUND IN THE WEST CORNER OF THE INTERSECTION OF MATILDA STREET AND BIRCHBROOK DRIVE.
- REV-3 A DOUBLE CUT ON THE EAST TOP OF LOT 34, BLOCK 12, 5408 LOVERS WALK, PHASE 2, PROJECT NO. 2015003882.

MATCH LINE SEE THIS SHEET
MILTON STREET

MATCH LINE SEE THIS SHEET
MATILDA STREET

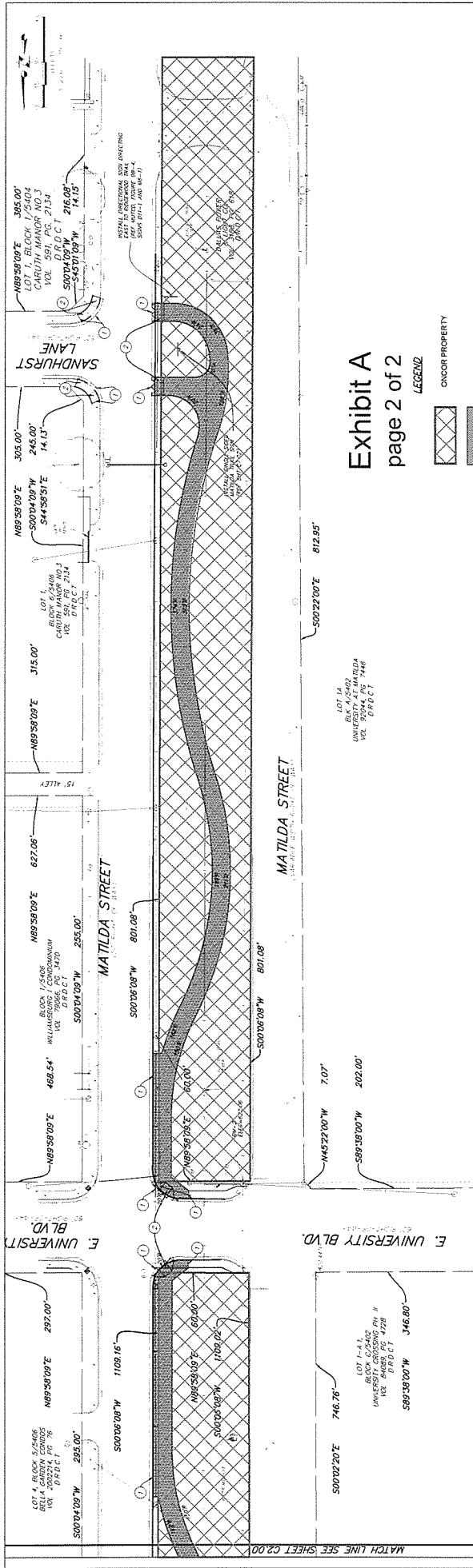


Exhibit A page 2 of 2

- LEGEND**
- ONCOR PROPERTY
 - PROPOSED MATILDA TRAIL

PAVING GENERAL NOTES

1. All materials and workmanship shall conform to the City of Dallas standards and specifications, and to the Standard Specifications for Public Works Construction for North Central Texas prepared by the North Texas Council of Governments, latest edition and the City of Dallas additions thereto.
2. The paving contractor shall be responsible for the adjustment of water and sanitary sewer appurtenances in accordance with the standard details and specifications of the City of Dallas.
3. Subgrade shall be scarified to depth of at least 6" and compacted to 90% percent of Standard Proctor density (ASTM D 698) at 95% of the materials optimum moisture content. The subgrade shall be in a moist condition at the time concrete is deposited thereon.
4. Dummy joints should be formed by one of the following methods: sawed, hand-formed or formed by preformed fiber joint depth should be equal to one-fourth (1/4) of the slab thickness. Hand formed joints should have a maximum edge radius of one-fourth (1/4) inch. Sawing of joints should begin as soon as the concrete has hardened sufficiently to permit sawing without excessive raveling. Joints should be cut to a depth of one-fourth (1/4) inch. Sawing of joints should be completed through the top 1/4 inch of the slab. Joints should be formed and sealed before opening joints are needed to traffic.
5. Expansion joints or isolation joints shall be used to isolate face slabs abutting or within the paved area. They should contain permitted joint filler for the full depth of the slab.
6. All dimensions are to face of curb unless otherwise noted.
7. All concrete shall be Class "C" concrete and have a min. compressive strength of 3600 psi at 28 days, and a minimum of 5% air entrained unless otherwise noted.
8. Contractor shall obtain and pay for all permits required.
9. Contractor shall dispose of surplus dirt, debris, etc. legally off-site. All work areas shall be cleaned up at the completion of the work.
10. Surface finishing shall be uniform, a liquid curing compound shall be uniformly sprayed on the concrete immediately after the finishing operation.
11. Contractor shall provide all safety devices for the protection of the public.
12. All parking stalls to be marked by a 4" wide painted white stripe as indicated on the drawings.
13. The use of fly ash in concrete will not be allowed.
14. Concrete pavement and structures shall be backfilled as soon as possible after forms are removed.
15. Fire lines shall be marked by an (6) inch wide lines using red traffic paint, with the wording "No Parking" and "Fire Lane" painted on the lines at intervals of fifteen (15) feet and lettering will be four (4) inches high and one (1) inch wide painted with white traffic paint or as required by the City.
16. All Barrier Free Ramps (BFR) must meet current American Disability Act (ADA) and Texas Accessibility Standard (TAS) requirements for slope, surface finish, and color.

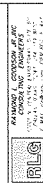
REVISIONS

REV-1: A BORING WAS SET AND CHAIRS OF REINFORCEMENT WERE PLACED IN THE EAST OF MATILDA STREET AND MATERIALS OF CONSTRUCTION OF CURB, GUTTER, MANHOLE, GROUND COVER, AND GROUND COVER SURVEY WERE COMPLETED.

REV-2: A REVISION WAS MADE IN THE WEST SIDE OF THE MATILDA STREET TO CORRECT THE DIMENSIONS OF THE CURB AND GUTTER.

REV-3: A CHANGE WAS MADE IN THE EAST SIDE OF MATILDA STREET TO CORRECT THE DIMENSIONS OF THE CURB AND GUTTER.

REV-4: A CHANGE WAS MADE IN THE EAST SIDE OF MATILDA STREET TO CORRECT THE DIMENSIONS OF THE CURB AND GUTTER.



PROGRESS SET - FOR REVIEW ONLY
Issued: 5/21/18

Stephan D. Schindl, D.E., #00888
Raymond L. Gossain, P.E., #10000

SHEET NO.
C2.01

PAVING PLAN			
HEB TRAIL			
RLG CONSULTING ENGINEERS, INC.			
CITY OF DALLAS, TEXAS			
PERSON	DRAWN	DATE	SCALE
REG	REG	9/24/18	1"=30'
FILE	1813	046	

- LEGEND**
- INSTALL 1" x 3/8" BARS @ 18" O.C.E.W. WITH #1
 - INSTALL 1" x 3/8" BARS @ 18" O.C.E.W. WITH #1
 - INSTALL 1" x 3/8" BARS @ 18" O.C.E.W. WITH #1
 - INSTALL 1" x 3/8" BARS @ 18" O.C.E.W. WITH #1
- LIMITS OF PAVEMENT SHALLOUT**
- 1. MATCH EXIST PAVEMENT
 - 2. MATCH EXIST PAVEMENT
- INSTALL BARRIERS FREE RAMP PER ADA (REF. SECTION 4-04 FROM CITY OF DALLAS STANDARD PLAN CONSTRUCTION DETAILS)**