

**WHEREAS**, the City of Dallas owns land in southwest Dallas known as the Dallas Zoo, which was acquired for park purposes and has been maintained as parkland; and

**WHEREAS**, the Dallas Zoo is currently platting the southwest section of the Zoo, referred to as the Wilds of Africa, to create one lot from platted and unplatted land for current and future development and is required to dedicate a portion of the land for drainage and floodway easements totaling approximately 116,015 square feet of land as needed by the City for public storm sewer lines and floodplain protection, as shown on Exhibit A, and the Park and Recreation Board is agreeable to providing the property for this use; and

**WHEREAS**, the Texas Parks and Wildlife Code, Chapter 26 (Section 26.001 through 26.004), requires that before a municipality may approve any program or project that requires the use or taking of any public land designated and used as parkland, the governing body of such public municipality must determine that there is no feasible and prudent alternative to the use or taking of such land, and that the program or project includes all reasonable planning to minimize harm to the remainder of the park; and

**WHEREAS**, prior to making this determination, notice must be given and a public hearing be held relative to the proposed change of park use; and

**WHEREAS**, the City Council desires to give notice and hold such hearing in accordance with the law with respect to the dedication of a portion of the Dallas Zoo to the City of Dallas.

**Now, Therefore,**

**BE IT RESOLVED BY THE PARK AND RECREATION BOARD AND CITY COUNCIL OF THE CITY OF DALLAS:**

**SECTION 1.** That the Park and Recreation Department is hereby authorized and directed to advise in writing of such proposed use of the park property by delivering a notice for publishing to the official newspaper to be advertised once each week for three consecutive weeks, the last publication to be not less than one week nor more than two weeks before the date of the hearing, which shall be held in the City Council Chambers on April 27, 2016.

**SECTION 2.** That the approval of the aforementioned project by the City Council, at the close of said hearing, shall be construed as making the proper findings as to the use, taking, and conveyance of parkland, consistent with the Texas Parks and Wildlife Code and the Texas Local Government Code.

**SECTION 3.** That this resolution shall take effect immediately from and after its passage in accordance with the provisions of the Charter of the City of Dallas, and it is accordingly so resolved.

APPROVED BY  
CITY COUNCIL

MAR 23 2016

*Paul B. Lewis*  
City Secretary

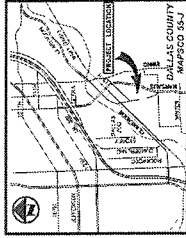


# Exhibit A

Page 2 of 3



GRAPHIC SCALE IN FEET  
0 25 50 100 150



VICINITY MAP  
(NOT TO SCALE)

## LEGEND

- 1. ALL RIGHTS RESERVED
- 2. CITY OF DALLAS
- 3. DALLAS COUNTY
- 4. DALLAS COUNTY
- 5. DALLAS COUNTY
- 6. DALLAS COUNTY
- 7. DALLAS COUNTY
- 8. DALLAS COUNTY
- 9. DALLAS COUNTY
- 10. DALLAS COUNTY
- 11. DALLAS COUNTY
- 12. DALLAS COUNTY
- 13. DALLAS COUNTY
- 14. DALLAS COUNTY
- 15. DALLAS COUNTY
- 16. DALLAS COUNTY
- 17. DALLAS COUNTY
- 18. DALLAS COUNTY
- 19. DALLAS COUNTY
- 20. DALLAS COUNTY
- 21. DALLAS COUNTY
- 22. DALLAS COUNTY
- 23. DALLAS COUNTY
- 24. DALLAS COUNTY
- 25. DALLAS COUNTY
- 26. DALLAS COUNTY
- 27. DALLAS COUNTY
- 28. DALLAS COUNTY
- 29. DALLAS COUNTY
- 30. DALLAS COUNTY
- 31. DALLAS COUNTY
- 32. DALLAS COUNTY
- 33. DALLAS COUNTY
- 34. DALLAS COUNTY
- 35. DALLAS COUNTY
- 36. DALLAS COUNTY
- 37. DALLAS COUNTY
- 38. DALLAS COUNTY
- 39. DALLAS COUNTY
- 40. DALLAS COUNTY
- 41. DALLAS COUNTY
- 42. DALLAS COUNTY
- 43. DALLAS COUNTY
- 44. DALLAS COUNTY
- 45. DALLAS COUNTY
- 46. DALLAS COUNTY
- 47. DALLAS COUNTY
- 48. DALLAS COUNTY
- 49. DALLAS COUNTY
- 50. DALLAS COUNTY
- 51. DALLAS COUNTY
- 52. DALLAS COUNTY
- 53. DALLAS COUNTY
- 54. DALLAS COUNTY
- 55. DALLAS COUNTY
- 56. DALLAS COUNTY
- 57. DALLAS COUNTY
- 58. DALLAS COUNTY
- 59. DALLAS COUNTY
- 60. DALLAS COUNTY
- 61. DALLAS COUNTY
- 62. DALLAS COUNTY
- 63. DALLAS COUNTY
- 64. DALLAS COUNTY
- 65. DALLAS COUNTY
- 66. DALLAS COUNTY
- 67. DALLAS COUNTY
- 68. DALLAS COUNTY
- 69. DALLAS COUNTY
- 70. DALLAS COUNTY
- 71. DALLAS COUNTY
- 72. DALLAS COUNTY
- 73. DALLAS COUNTY
- 74. DALLAS COUNTY
- 75. DALLAS COUNTY
- 76. DALLAS COUNTY
- 77. DALLAS COUNTY
- 78. DALLAS COUNTY
- 79. DALLAS COUNTY
- 80. DALLAS COUNTY
- 81. DALLAS COUNTY
- 82. DALLAS COUNTY
- 83. DALLAS COUNTY
- 84. DALLAS COUNTY
- 85. DALLAS COUNTY
- 86. DALLAS COUNTY
- 87. DALLAS COUNTY
- 88. DALLAS COUNTY
- 89. DALLAS COUNTY
- 90. DALLAS COUNTY
- 91. DALLAS COUNTY
- 92. DALLAS COUNTY
- 93. DALLAS COUNTY
- 94. DALLAS COUNTY
- 95. DALLAS COUNTY
- 96. DALLAS COUNTY
- 97. DALLAS COUNTY
- 98. DALLAS COUNTY
- 99. DALLAS COUNTY
- 100. DALLAS COUNTY

## PRELIMINARY

THIS SURVEY SHALL NOT BE CONSIDERED VALID UNLESS IT IS FILED WITH THE COUNTY CLERK OF DALLAS COUNTY, TEXAS, AND IS SUBJECT TO ALL TYPICAL SURVEY DOCUMENT RECORDING FEES.

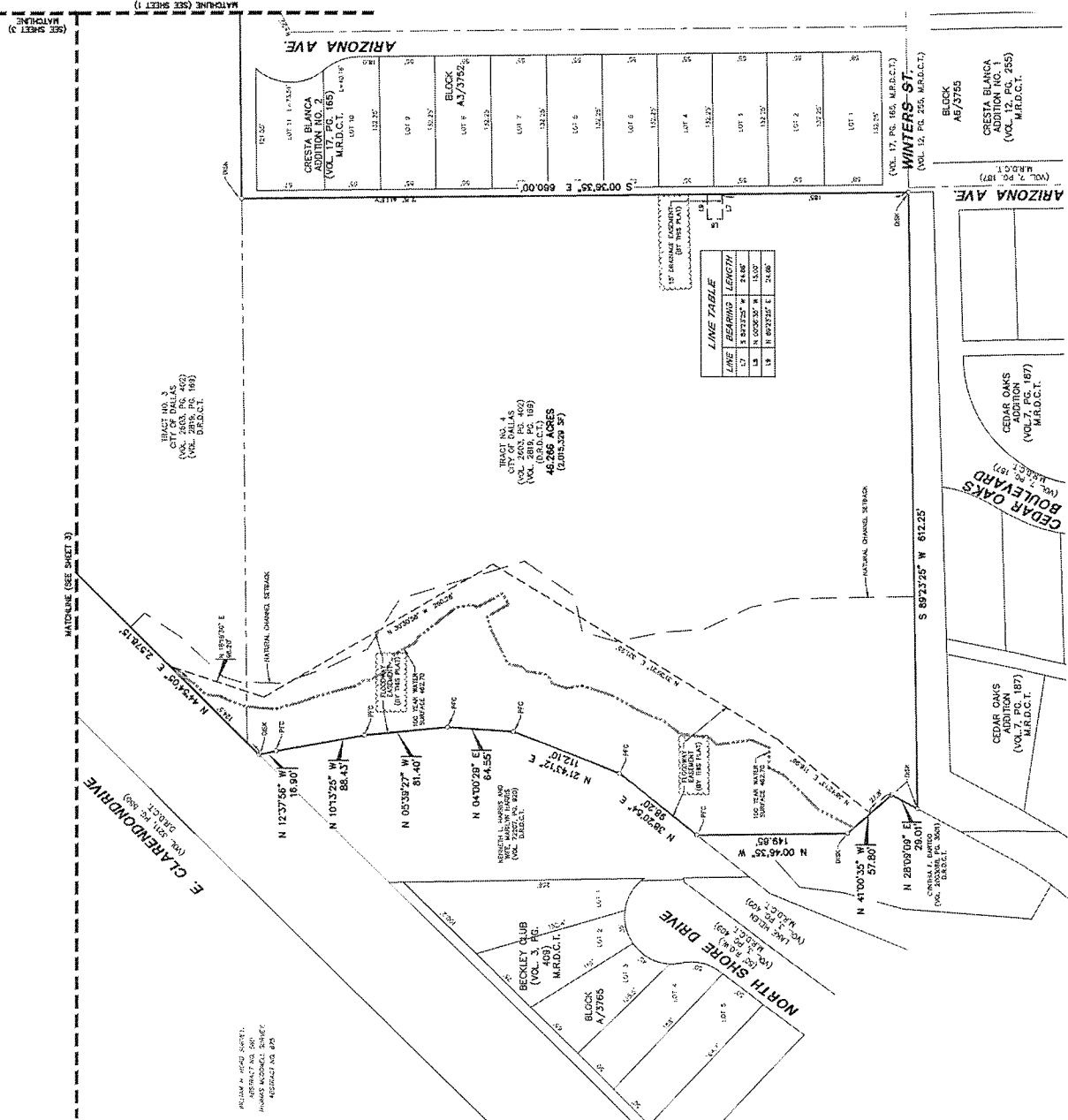
## PRELIMINARY PLAT

# WILDS OF AFRICA LOT 1, BLOCK 3442

BEING PART OF CITY BLOCKS 3442, AND 3753, PART OF THOMAS' SOUTH OAK CLEFT ADDITION, PART OF J. OAK SMITH'S SUBDIVISION AND PART OF THE SUBDIVISION AND BEING OUT OF THE WILLIAM H. HORD SURVEY, ABSTRACT NO. 560 THOMAS MCDOWELL SURVEY, ABSTRACT NO. 875, CITY OF DALLAS, DALLAS COUNTY, TEXAS CITY PLAN FILE NUMBER: 5145-248 ENGINEERING PLAN NUMBER: 3111-8894

SHEET 2 OF 5

**Pacheco Koch**  
 10000 W. LAKELAND BLVD., SUITE 1000, DALLAS, TEXAS 75243  
 214.343.3333  
 FAX: 214.343.3334  
 WWW.PACHECO-KOCH.COM  
 PREPARED BY: PACHECO-KOCH  
 DATE: JAN 2016  
 SCALE: 1"=50'  
 PROJECT NO.: 1599-14.148  
 SHEET NO.: 2



REMARKS:  
 1. THIS SURVEY WAS MADE FROM THE SURVEY POINTS SHOWN ON THE SURVEY MAP AND THE SURVEY POINTS SHOWN ON THE SURVEY MAP.  
 2. THE SURVEY WAS MADE BY THE SURVEYOR AND HIS ASSISTANTS.  
 3. THE SURVEY WAS MADE ON THE DATE SHOWN ON THE SURVEY MAP.  
 4. THE SURVEY WAS MADE IN ACCORDANCE WITH THE SURVEYING CODE OF TEXAS.  
 5. THE SURVEY WAS MADE IN ACCORDANCE WITH THE SURVEYING CODE OF TEXAS.  
 6. THE SURVEY WAS MADE IN ACCORDANCE WITH THE SURVEYING CODE OF TEXAS.  
 7. THE SURVEY WAS MADE IN ACCORDANCE WITH THE SURVEYING CODE OF TEXAS.  
 8. THE SURVEY WAS MADE IN ACCORDANCE WITH THE SURVEYING CODE OF TEXAS.  
 9. THE SURVEY WAS MADE IN ACCORDANCE WITH THE SURVEYING CODE OF TEXAS.  
 10. THE SURVEY WAS MADE IN ACCORDANCE WITH THE SURVEYING CODE OF TEXAS.

SUBJECTS:  
 TRACT NO. 3  
 CITY OF DALLAS  
 (VOL. 2815, PG. 189)  
 (M.R.D.C.T.)

TRACT NO. 4  
 CITY OF DALLAS  
 (VOL. 2815, PG. 189)  
 (M.R.D.C.T.)

TRACT NO. 1  
 CITY OF DALLAS  
 (VOL. 17, PG. 165)  
 (M.R.D.C.T.)

TRACT NO. 2  
 CITY OF DALLAS  
 (VOL. 17, PG. 165)  
 (M.R.D.C.T.)

TRACT NO. 3  
 CITY OF DALLAS  
 (VOL. 17, PG. 165)  
 (M.R.D.C.T.)

TRACT NO. 4  
 CITY OF DALLAS  
 (VOL. 17, PG. 165)  
 (M.R.D.C.T.)

TRACT NO. 5  
 CITY OF DALLAS  
 (VOL. 17, PG. 165)  
 (M.R.D.C.T.)

TRACT NO. 6  
 CITY OF DALLAS  
 (VOL. 17, PG. 165)  
 (M.R.D.C.T.)

TRACT NO. 7  
 CITY OF DALLAS  
 (VOL. 17, PG. 165)  
 (M.R.D.C.T.)

TRACT NO. 8  
 CITY OF DALLAS  
 (VOL. 17, PG. 165)  
 (M.R.D.C.T.)

TRACT NO. 9  
 CITY OF DALLAS  
 (VOL. 17, PG. 165)  
 (M.R.D.C.T.)

TRACT NO. 10  
 CITY OF DALLAS  
 (VOL. 17, PG. 165)  
 (M.R.D.C.T.)

TRACT NO. 11  
 CITY OF DALLAS  
 (VOL. 17, PG. 165)  
 (M.R.D.C.T.)

TRACT NO. 12  
 CITY OF DALLAS  
 (VOL. 17, PG. 165)  
 (M.R.D.C.T.)

TRACT NO. 13  
 CITY OF DALLAS  
 (VOL. 17, PG. 165)  
 (M.R.D.C.T.)

TRACT NO. 14  
 CITY OF DALLAS  
 (VOL. 17, PG. 165)  
 (M.R.D.C.T.)

TRACT NO. 15  
 CITY OF DALLAS  
 (VOL. 17, PG. 165)  
 (M.R.D.C.T.)

TRACT NO. 16  
 CITY OF DALLAS  
 (VOL. 17, PG. 165)  
 (M.R.D.C.T.)

TRACT NO. 17  
 CITY OF DALLAS  
 (VOL. 17, PG. 165)  
 (M.R.D.C.T.)

TRACT NO. 18  
 CITY OF DALLAS  
 (VOL. 17, PG. 165)  
 (M.R.D.C.T.)

