

May 22, 2013

WHEREAS, the City of Dallas, jointly with the City of Fort Worth, owns certain land in various Surveys and Abstracts in Dallas and Tarrant Counties, Texas, said parcels being deeded to the City of Dallas and City of Fort Worth and recorded in various Volumes and Pages of the Deed Records, of Dallas County, Texas, which is used for the Dallas/Fort Worth International Airport; and

WHEREAS, Dallas Area Rapid Transit has requested a perpetual easement containing a total of approximately 68 acres of land, and being more fully described in Exhibit "A", attached hereto and incorporated herein for all purposes, for the construction and operation of an extension of its light rail transit system, Irving 3 Line Section, onto property within the boundaries of the Dallas/Fort Worth International Airport (Airport), which will include public rail transit facilities, including without limitation associated utilities, communication facilities, bridge structures, spans, and any other related facilities or structures that facilitate, support or promote public rail transit to the Airport; and

WHEREAS, Dallas Area Rapid Transit needs and desires easements for the construction and operation of an extension of its light rail transit system that will benefit the Airport; and

WHEREAS, under a compensation agreement with the Airport, DART will convey to the Airport two perpetual easements containing approximately 21,000 square feet of land allowing the Airport to cross the Cotton Belt railway at two on-Airport sites with roadway and utility infrastructure; and

Now, Therefore,

BE IT RESOLVED BY THE CITY COUNCIL OF THE CITY OF DALLAS:

SECTION 1. That the City Manager is authorized to execute and deliver to Dallas Area Rapid Transit (DART) Easements to be attested by the City Secretary upon approval as to form by the City Attorney for the Public Mass Transit Easement instrument as to the approximately 68 acres of land more fully described in Exhibit "A", attached hereto and incorporated herein for all purposes.

SECTION 2. That the City Manager is authorized to accept conveyance of two easements containing a total of approximately 21,000 square feet of land from DART to cross the Cotton Belt railway on the Airport property upon approval as to form by the City Attorney for the roadway and utility easement instrument.

SECTION 3. That there shall be no cost consideration to the City for the conveyances described in this resolution.

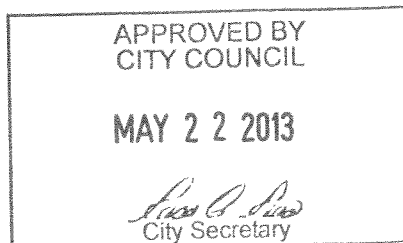
SECTION 4. That the approvals and authorizations contained in this resolution are further conditioned upon similar approvals and authorizations by the City Council of the City of Fort Worth.

SECTION 5. That this resolution shall take effect immediately from and after its passage in accordance with the provisions of the Charter of the City of Dallas, and it is accordingly so resolved.

APPROVED AS TO FORM:

THOMAS P. PERKINS, JR., City Attorney

BY: 
Assistant City Attorney



DART PARCEL NO. I3-002
PROPERTY OF CITY OF DALLAS
B. B. B. & C. RR CO. SURVEY, ABSTRACT NO. 193 ET AL
CITIES OF IRVING AND GRAPEVINE
DALLAS AND TARRANT COUNTIES, TEXAS

Page 1 of 18
June 15, 2012

DESCRIPTION

BEING a 62.736 acre tract of land situated in the Cities of Grapevine and Irving, Dallas and Tarrant County, Texas, on the DFW International Airport property in the B. B. B. & C. RR SURVEY, ABSTRACT NO. 193, the HEIRS OF FRANCIS JONES SURVEY, ABSTRACT NO. 670, the WILSON T. McLAUGHLIN SURVEY, ABSTRACT NO. 907, the JOHN BRUAN SURVEY, ABSTRACT NO. 173, the ELIAS BRUSH SURVEY, ABSTRACT NO. 51, the B. B. B. & C. RR CO. SURVEY, ABSTRACT NO. 194, the JOHN H. COLE SURVEY, ABSTRACT NO. 374, the SCT FORD SURVEY, ABSTRACT NO. 1621, the WILLIAM BRUTON SURVEY, ABSTRACT NO. 1695 and the R. H. BURNETT SURVEY, ABSTRACT NO. 1698 in Dallas County, Texas, the SCT FORD SURVEY, ABSTRACT NO. 512, the WILLIAM BRUTON SURVEY, ABSTRACT NO. 112, the R.H. BURNETT SURVEY, ABSTRACT NO. 158, and the HENRY SUGGS SURVEY, ABSTRACT NO. 1414 in Tarrant County, Texas, said tract being part of tracts of land described in deeds to the City of Dallas recorded in Volume 68145, Page 1337, Volume 69084, Page 1096, Volume 69073, Page 673, Volume 70014, Page 923, Volume 68145, Page 1256, Volume 69002, Page 1389, Volume 70123, Page 957, Volume 69049, Page 1025, Volume 68190, Page 1213, Volume 69249, Page 1487, Volume 69223, Page 731, Volume 68168, Page 1329, Volume 69059, Page 1343, Volume 68211, Page 1674, Volume 68183, Page 723, Volume 68195, Page 1146, Volume 68072, Page 1449, Volume 72043, Page 872, Volume 68117, Page 1630, Volume 70023, Page 1000, Volume 71137, Page 1086, all of the Deed Records of Dallas County, Texas, Instrument No. 2011003400701 of the Official Public Records of Dallas County, Texas, and Cause No. CC 70-2573 of the County Court Records of Dallas County, Texas, and parts of tracts of land described in deeds to the City of Ft. Worth recorded in Volume 4740, Page 139, Volume 4941, Page 169 of the Deed Records of Tarrant County, Texas, and Judgement No. 64045 of the Tarrant County Court Records, and being more particularly described as follows:

CONMMENCING at a 5/8-inch steel rod with cap marked "DFW" (controlling monument) found in the east right-of-way of Belt Line Road (120' right-of-way south of this point, 130' right-of-way north of this point) for the most northerly corner of a called 18.014 acre tract of land described in a deed to the City of Dallas recorded in Volume 74013, Page 479 of said Deed Records;

THENCE North 45 degrees 33 minutes 54 seconds West, crossing Belt Line Road, a distance of 170.30 feet to a 1/2-inch steel rod with a cap marked "AZ&B" set in the west right-of-way thereof for the **POINT OF BEGINNING** (surface northing 7011980.99 and surface easting 2431904.41);

DART PARCEL NO. I3-002
PROPERTY OF CITY OF DALLAS
B. B. B. & C. RR CO. SURVEY, ABSTRACT NO. 193 ET AL
CITIES OF IRVING AND GRAPEVINE
DALLAS AND TARRANT COUNTIES, TEXAS

Page 2 of 18
June 15, 2012

1. **THENCE** South 00 degrees 45 minutes 19 seconds East, along the east right-of-way line of Belt Line Road, a distance of 336.29 feet to a 1/2-inch steel rod with a cap marked "AZ&B" set for corner;

THENCE across said Airport property the following 147 courses and distances:

2. North 41 degrees 11 minutes 30 seconds West, a distance of 206.41 feet;
3. North 35 degrees 13 minutes 27 seconds West, a distance of 499.57 feet;
4. North 48 degrees 13 minutes 42 seconds West, a distance of 376.50 feet;
5. North 59 degrees 01 minute 47 seconds West, a distance of 118.14 feet;
6. North 49 degrees 01 minute 47 seconds West, a distance of 980.87 feet;
7. North 44 degrees 01 minute 47 seconds West, a distance of 183.58 feet;
8. North 49 degrees 01 minute 47 seconds West, a distance of 689.36 feet;
9. North 53 degrees 22 minutes 33 seconds West, a distance of 305.00 feet;
10. North 41 degrees 41 minutes 33 seconds West, a distance of 180.98 feet;
11. North 49 degrees 01 minute 47 seconds West, a distance of 220.02 feet;
12. North 59 degrees 01 minute 47 seconds West, a distance of 161.25 feet;
13. North 49 degrees 01 minute 47 seconds West, a distance of 261.19 feet;
14. North 43 degrees 17 minutes 14 seconds West, a distance of 403.41 feet;
15. North 47 degrees 10 minutes 16 seconds West, a distance of 546.24 feet to the beginning of a non-tangent curve to the right;
16. Northwesterly, along the curve to the right which has a chord that bears North 42 degrees 21 minutes 06 seconds West for 522.03 feet, a central angle of 03 degrees 06 minutes 22 seconds and a radius of 9631.09 feet, for an arc distance of 522.10 feet to the end of said curve;
17. North 40 degrees 47 minutes 55 seconds West, a distance of 756.93 feet;
18. North 37 degrees 15 minutes 53 seconds West, a distance of 800.34 feet;
19. North 51 degrees 08 minutes 15 seconds West, a distance of 82.67 feet;
20. North 07 degrees 44 minutes 32 seconds East, a distance of 91.38 feet;

**DART PARCEL NO. I3-002
PROPERTY OF CITY OF DALLAS
B. B. B. & C. RR CO. SURVEY, ABSTRACT NO. 193 ET AL
CITIES OF IRVING AND GRAPEVINE
DALLAS AND TARRANT COUNTIES, TEXAS**

**Page 3 of 18
June 15, 2012**

21. North 44 degrees 52 minutes 21 seconds East, a distance of 55.24 feet;
22. North 34 degrees 28 minutes 35 seconds West, a distance of 130.72 feet;
23. North 78 degrees 35 minutes 17 seconds West, a distance of 36.07 feet;
24. North 37 degrees 01 minute 39 seconds West, a distance of 261.45 feet;
25. North 07 degrees 03 minutes 13 seconds West, a distance of 116.33 feet;
26. North 33 degrees 03 minutes 25 seconds West, a distance of 355.75 feet;
27. North 62 degrees 14 minutes 16 seconds West, a distance of 110.75 feet;
28. North 23 degrees 14 minutes 45 seconds West, a distance of 134.97 feet;
29. North 31 degrees 08 minutes 32 seconds West, a distance of 523.74 feet;
30. North 36 degrees 19 minutes 51 seconds West, a distance of 302.45 feet to the beginning of a tangent curve to the left;
31. Northwesterly, along the curve to the left which has a chord that bears North 41 degrees 00 minutes 31 seconds West for 845.08 feet, a central angle of 09 degrees 21 minutes 20 seconds and a radius of 5181.26 feet, for an arc distance of 846.02 feet to the end of said curve;
32. South 44 degrees 16 minutes 54 seconds West, a distance of 43.86 feet;
33. North 45 degrees 43 minutes 06 seconds West, a distance of 109.77 feet;
34. South 89 degrees 16 minutes 54 seconds West, a distance of 7.07 feet;
35. South 44 degrees 16 minutes 54 seconds West, a distance of 16.38 feet to the beginning of a tangent curve to the right;
36. Southwesterly, along the curve to the right which has a chord that bears South 63 degrees 52 minutes 34 seconds West for 226.03 feet, a central angle of 39 degrees 11 minutes 20 seconds and a radius of 337.00 feet, for an arc distance of 230.50 feet to the end of said curve;
37. South 83 degrees 28 minutes 14 seconds West, a distance of 209.23 feet;
38. South 61 degrees 28 minutes 46 seconds West, a distance of 29.18 feet to the beginning of a non-tangent curve to the left;
39. Northwesterly, along the curve to the left which has a chord that bears North 30 degrees 26 minutes 42 seconds West for 169.13 feet, a central angle of 50

**DART PARCEL NO. I3-002
PROPERTY OF CITY OF DALLAS
B. B. B. & C. RR CO. SURVEY, ABSTRACT NO. 193 ET AL
CITIES OF IRVING AND GRAPEVINE
DALLAS AND TARRANT COUNTIES, TEXAS**

**Page 4 of 18
June 15, 2012**

degrees 18 minutes 53 seconds and a radius of 198.92 feet, for an arc distance of 174.68 feet to the end of said curve;

40. South 68 degrees 30 minutes 15 seconds East, a distance of 105.73 feet;
41. North 83 degrees 28 minutes 14 seconds East, a distance of 211.52 feet to the beginning of a tangent curve to the left;
42. Northeasterly, along the curve to the left which has a chord that bears North 66 degrees 48 minutes 44 seconds East for 139.32 feet, a central angle of 33 degrees 19 minutes 00 seconds and a radius of 243.00 feet, for an arc distance of 141.30 feet to the end of said curve;
43. North 45 degrees 43 minutes 06 seconds West, a distance of 72.54 feet;
44. North 44 degrees 16 minutes 54 seconds East, a distance of 91.61 feet;
45. North 42 degrees 43 minutes 41 seconds West, a distance of 240.17 feet;
46. North 45 degrees 43 minutes 06 seconds West, a distance of 278.00 feet;
47. North 46 degrees 31 minutes 18 seconds West, a distance of 214.02 feet;
48. North 48 degrees 03 minutes 05 seconds West, a distance of 270.22 feet;
49. North 45 degrees 43 minutes 06 seconds West, a distance of 70.00 feet;
50. North 40 degrees 13 minutes 05 seconds West, a distance of 135.62 feet;
51. North 45 degrees 43 minutes 06 seconds West, a distance of 220.00 feet;
52. North 42 degrees 12 minutes 54 seconds West, a distance of 49.09 feet;
53. North 46 degrees 07 minutes 08 seconds West, a distance of 241.08 feet;
54. North 54 degrees 10 minutes 37 seconds West, a distance of 68.35 feet;
55. South 44 degrees 36 minutes 20 seconds West, a distance of 38.06 feet;
56. North 45 degrees 04 minutes 48 seconds West, a distance of 558.43 feet;
57. North 48 degrees 59 minutes 51 seconds West, a distance of 107.00 feet;
58. North 41 degrees 00 minutes 09 seconds East, a distance of 10.00 feet;
59. North 49 degrees 31 minutes 37 seconds West, a distance of 548.58 feet;
60. North 45 degrees 21 minutes 11 seconds West, a distance of 95.14 feet to the beginning of a non-tangent curve to the left;

**DART PARCEL NO. I3-002
PROPERTY OF CITY OF DALLAS
B. B. B. & C. RR CO. SURVEY, ABSTRACT NO. 193 ET AL
CITIES OF IRVING AND GRAPEVINE
DALLAS AND TARRANT COUNTIES, TEXAS**

**Page 5 of 18
June 15, 2012**

61. Northwesterly, along the curve to the left which has a chord that bears North 43 degrees 17 minutes 29 seconds West for 90.69 feet, a central angle of 04 degrees 50 minutes 42 seconds and a radius of 1072.84 feet, for an arc distance of 90.72 feet to the end of said curve;
62. North 45 degrees 42 minutes 50 seconds West, a distance of 595.62 feet;
63. North 43 degrees 41 minutes 39 seconds East, a distance of 6.09 feet;
64. North 44 degrees 19 minutes 24 seconds West, a distance of 530.86 feet;
65. North 89 degrees 19 minutes 24 seconds West, a distance of 20.11 feet;
66. North 40 degrees 57 minutes 19 seconds West, a distance of 219.40 feet;
67. North 46 degrees 36 minutes 50 seconds West, a distance of 66.79 feet;
68. North 43 degrees 36 minutes 25 seconds West, a distance of 204.90 feet to the beginning of a tangent curve to the left;
69. Northwesterly, along the curve to the left which has a chord that bears North 45 degrees 27 minutes 59 seconds West for 129.79 feet, a central angle of 03 degrees 43 minutes 08 seconds and a radius of 2000.00 feet, for an arc distance of 129.81 feet to the end of said curve and the beginning of a tangent compound curve to the left;
70. Northwesterly, along the curve to the left which has a chord that bears North 50 degrees 01 minute 47 seconds West for 290.50 feet, a central angle of 05 degrees 24 minutes 28 seconds and a radius of 3079.00 feet, for an arc distance of 290.61 feet to the end of said curve;
71. North 67 degrees 01 minute 20 seconds West, a distance of 74.29 feet to the beginning of a non-tangent curve to the left;
72. Northwesterly, along the curve to the left which has a chord that bears North 63 degrees 09 minutes 34 seconds West for 934.94 feet, a central angle of 17 degrees 31 minutes 31 seconds and a radius of 3068.54 feet, for an arc distance of 938.59 feet to the end of said curve;
73. North 71 degrees 55 minutes 20 seconds West, a distance of 67.27 feet to the beginning of a tangent curve to the left;
74. Westerly, along the curve to the left which has a chord that bears North 74 degrees 00 minutes 41 seconds West for 224.85 feet, a central angle of 04 degrees 10 minutes 42 seconds and a radius of 3084.01 feet, for an arc distance of 224.90 feet to the end of said curve;

**DART PARCEL NO. I3-002
PROPERTY OF CITY OF DALLAS
B. B. B. & C. RR CO. SURVEY, ABSTRACT NO. 193 ET AL
CITIES OF IRVING AND GRAPEVINE
DALLAS AND TARRANT COUNTIES, TEXAS**

**Page 6 of 18
June 15, 2012**

75. North 82 degrees 18 minutes 40 seconds West, a distance of 277.09 feet to the beginning of a tangent curve to the left;
76. Westerly, along the curve to the left which has a chord that bears North 86 degrees 54 minutes 27 seconds West for 488.07 feet, a central angle of 09 degrees 11 minutes 33 seconds and a radius of 3045.33 feet, for an arc distance of 488.59 feet to the end of said curve and the beginning of a tangent compound curve to the left;
77. Westerly, along the curve to the left which has a chord that bears South 85 degrees 40 minutes 06 seconds West for 98.68 feet, a central angle of 05 degrees 39 minutes 22 seconds and a radius of 1000.00 feet, for an arc distance of 98.72 feet to the end of said curve;
78. South 82 degrees 50 minutes 25 seconds West, a distance of 202.13 feet to the beginning of a tangent curve to the left;
79. Westerly, along the curve to the left which has a chord that bears South 81 degrees 50 minutes 17 seconds West for 106.60 feet, a central angle of 02 degrees 00 minutes 15 seconds and a radius of 3047.56 feet, for an arc distance of 106.60 feet to the end of said curve;
80. South 33 degrees 12 minutes 27 seconds West, a distance of 21.06 feet to the beginning of a non-tangent curve to the left;
81. Westerly, along the curve to the left which has a chord that bears South 73 degrees 56 minutes 07 seconds West for 787.30 feet, a central angle of 14 degrees 30 minutes 11 seconds and a radius of 3118.62 feet, for an arc distance of 789.41 feet to the end of said curve;
82. South 66 degrees 41 minutes 01 second West, a distance of 63.74 feet to the beginning of a tangent curve to the left;
83. Southwesterly, along the compound curve to the left which has a chord that bears South 48 degrees 52 minutes 45 seconds West for 846.99 feet, a central angle of 35 degrees 36 minutes 34 seconds and a radius of 1385.00 feet, for an arc distance of 860.78 feet to the end of said curve;
84. South 22 degrees 41 minutes 30 seconds West, a distance of 331.32 feet;
85. South 15 degrees 59 minutes 22 seconds West, a distance of 214.31 feet;
86. South 02 degrees 43 minutes 17 seconds West, a distance of 284.82 feet;
87. South 48 degrees 04 minutes 39 seconds West, a distance of 25.31 feet;
88. South 03 degrees 04 minutes 39 seconds West, a distance of 1611.38 feet;

**DART PARCEL NO. 13-002
PROPERTY OF CITY OF DALLAS
B. B. B. & C. RR CO. SURVEY, ABSTRACT NO. 193 ET AL
CITIES OF IRVING AND GRAPEVINE
DALLAS AND TARRANT COUNTIES, TEXAS**

**Page 7 of 18
June 15, 2012**

89. South 03 degrees 45 minutes 07 seconds East, a distance of 168.19 feet;
90. South 00 degrees 16 minutes 38 seconds West, a distance of 204.67 feet;
91. South 12 degrees 49 minutes 23 seconds West, a distance of 94.51 feet;
92. South 03 degrees 04 minutes 39 seconds West, a distance of 149.89 feet;
93. South 55 degrees 39 minutes 32 seconds East, a distance of 87.74 feet;
94. South 00 degrees 34 minutes 19 seconds East, a distance of 728.19 feet to the beginning of a tangent curve to the right;
95. Southerly, along the curve to the right which has a chord that bears South 06 degrees 55 minutes 15 seconds West for 216.21 feet, a central angle of 14 degrees 59 minutes 08 seconds and a radius of 829.01 feet, for an arc distance of 216.83 feet to the end of said curve;
96. North 86 degrees 24 minutes 46 seconds West, a distance of 23.06 feet to the beginning of a non-tangent curve to the right;
97. Southerly, along the curve to the right which has a chord that bears South 20 degrees 00 minutes 09 seconds West for 136.70 feet, a central angle of 09 degrees 49 minutes 24 seconds and a radius of 798.33 feet, for an arc distance of 136.87 feet to the end of said curve;
98. South 06 degrees 27 minutes 43 seconds West, a distance of 262.00 feet;
99. South 00 degrees 33 minutes 13 seconds East, a distance of 783.15 feet;
100. South 04 degrees 10 minutes 30 seconds East, a distance of 189.98 feet;
101. South 89 degrees 26 minutes 47 seconds West, a distance of 15.83 feet;
102. South 00 degrees 33 minutes 13 seconds East, a distance of 528.00 feet;
103. South 89 degrees 26 minutes 47 seconds West, a distance of 24.83 feet;
104. North 00 degrees 33 minutes 13 seconds West, a distance of 528.00 feet;
105. South 89 degrees 26 minutes 47 seconds West, a distance of 17.33 feet;
106. North 00 degrees 33 minutes 13 seconds West, a distance of 1539.78 feet;
107. North 10 degrees 51 minutes 30 seconds West, a distance of 22.36 feet;
108. North 00 degrees 29 minutes 39 seconds West, a distance of 386.48 feet to the beginning of a tangent curve to the right;

**DART PARCEL NO. I3-002
PROPERTY OF CITY OF DALLAS
B. B. B. & C. RR CO. SURVEY, ABSTRACT NO. 193 ET AL
CITIES OF IRVING AND GRAPEVINE
DALLAS AND TARRANT COUNTIES, TEXAS**

Page 8 of 18
June 15, 2012

109. Northerly, along the curve to the right which has a chord that bears North 02 degrees 13 minutes 13 seconds East for 284.17 feet, a central angle of 05 degrees 25 minutes 45 seconds and a radius of 3000.00 feet, for an arc distance of 284.27 feet to the end of said curve;
110. North 12 degrees 39 minutes 37 seconds East, a distance of 78.09 feet;
111. North 03 degrees 04 minutes 39 seconds East, a distance of 117.68 feet;
112. North 86 degrees 55 minutes 21 seconds West, a distance of 19.80 feet;
113. North 01 degrees 31 minutes 41 seconds East, a distance of 21.72 feet to the beginning of a non-tangent curve to the left;
114. Northerly, along the curve to the left which has a chord that bears North 18 degrees 53 minutes 02 seconds East for 80.76 feet, a central angle of 36 degrees 11 minutes 32 seconds and a radius of 130.00 feet, for an arc distance of 82.12 feet to the end of said curve;
115. North 00 degrees 47 minutes 16 seconds East, a distance of 290.63 feet;
116. North 02 degrees 20 minutes 14 seconds West, a distance of 105.97 feet;
117. North 00 degrees 45 minutes 49 seconds West, a distance of 283.64 feet;
118. North 12 degrees 08 minutes 56 seconds East, a distance of 120.51 feet;
119. North 03 degrees 04 minutes 39 seconds East, a distance of 1266.61 feet;
120. North 41 degrees 55 minutes 21 seconds West, a distance of 14.20 feet;
121. North 06 degrees 12 minutes 18 seconds East, a distance of 239.19 feet to the beginning of a tangent curve to the right;
122. Northerly, along the curve to the right which has a chord that bears North 09 degrees 47 minutes 16 seconds East for 187.14 feet, a central angle of 07 degrees 09 minutes 57 seconds and a radius of 1497.25 feet, for an arc distance of 187.26 feet to the end of said curve;
123. North 13 degrees 22 minutes 15 seconds East, a distance of 274.78 feet to the beginning of a non-tangent curve to the right;
124. Northeasterly, along the curve to the right which has a chord that bears North 41 degrees 25 minutes 59 seconds East for 839.65 feet, a central angle of 27 degrees 03 minutes 45 seconds and a radius of 1794.32 feet, for an arc distance of 847.51 feet to the end of said curve;

DART PARCEL NO. I3-002
PROPERTY OF CITY OF DALLAS
B. B. B. & C. RR CO. SURVEY, ABSTRACT NO. 193 ET AL
CITIES OF IRVING AND GRAPEVINE
DALLAS AND TARRANT COUNTIES, TEXAS

Page 9 of 18
June 15, 2012

125. North 54 degrees 57 minutes 50 seconds East, a distance of 79.60 feet to the beginning of a tangent curve to the right;
126. Northeasterly, along the curve to the right which has a chord that bears North 60 degrees 43 minutes 09 seconds East for 287.56 feet, a central angle of 11 degrees 30 minutes 38 seconds and a radius of 1433.82 feet, for an arc distance of 288.05 feet to the end of said curve;
127. North 66 degrees 28 minutes 28 seconds East, a distance of 323.39 feet;
128. North 78 degrees 39 minutes 52 seconds East, a distance of 67.05 feet;
129. North 73 degrees 55 minutes 11 seconds East, a distance of 190.06 feet to the beginning of a tangent curve to the right;
130. Easterly, along the curve to the right which has a chord that bears North 77 degrees 38 minutes 36 seconds East for 129.89 feet, a central angle of 07 degrees 26 minutes 51 seconds and a radius of 1000.00 feet, for an arc distance of 129.98 feet to the end of said curve and the beginning of a tangent compound curve to the right;
131. Easterly, along the curve to the right which has a chord that bears North 88 degrees 56 minutes 32 seconds East for 962.17 feet, a central angle of 15 degrees 09 minutes 00 seconds and a radius of 3649.42 feet, for an arc distance of 964.97 feet to the end of said curve and the beginning of another tangent compound curve to the right;
132. Easterly, along the curve to the right which has a chord that bears South 81 degrees 39 minutes 20 seconds East for 63.77 feet, a central angle of 03 degrees 39 minutes 17 seconds and a radius of 1000.00 feet, for an arc distance of 63.79 feet to the end of said curve;
133. South 79 degrees 49 minutes 41 seconds East, a distance of 117.92 feet;
134. South 76 degrees 30 minutes 34 seconds East, a distance of 170.96 feet;
135. South 74 degrees 33 minutes 57 seconds East, a distance of 127.24 feet to the beginning of a tangent curve to the right;
136. Southeasterly, along the curve to the right which has a chord that bears South 68 degrees 46 minutes 07 seconds East for 635.95 feet, a central angle of 11 degrees 35 minutes 42 seconds and a radius of 3147.91 feet, for an arc distance of 637.04 feet to the end of said curve and the beginning of a tangent compound curve to the right;

**DART PARCEL NO. I3-002
PROPERTY OF CITY OF DALLAS
B. B. B. & C. RR CO. SURVEY, ABSTRACT NO. 193 ET AL
CITIES OF IRVING AND GRAPEVINE
DALLAS AND TARRANT COUNTIES, TEXAS**

**Page 10 of 18
June 15, 2012**

137. Southeasterly, along the curve to the right which has a chord that bears South 61 degrees 06 minutes 50 seconds East for 64.81 feet, a central angle of 03 degrees 42 minutes 51 seconds and a radius of 1000.00 feet, for an arc distance of 64.82 feet to the end of said curve;
138. South 59 degrees 15 minutes 25 seconds East, a distance of 195.83 feet;
139. South 52 degrees 14 minutes 52 seconds East, a distance of 200.21 feet to the beginning of a tangent curve to the right;
140. Southeasterly, along the curve to the right which has a chord that bears South 51 degrees 08 minutes 47 seconds East for 38.45 feet, a central angle of 02 degrees 12 minutes 11 seconds and a radius of 1000.00 feet, for an arc distance of 38.45 feet to the end of said curve;
141. South 50 degrees 02 minutes 41 seconds East, a distance of 208.52 feet to the beginning of a tangent curve to the right;
142. Southeasterly, along the curve to the right which has a chord that bears South 47 degrees 22 minutes 35 seconds East for 290.40 feet, a central angle of 05 degrees 20 minutes 12 seconds and a radius of 3119.00 feet, for an arc distance of 290.50 feet to the end of said curve;
143. South 44 degrees 42 minutes 30 seconds east, a distance of 204.15 feet;
144. South 44 degrees 19 minutes 24 seconds East, a distance of 755.41 feet to the beginning of a non-tangent curve to the right;
145. Southeasterly, along the curve to the right which has a chord that bears South 44 degrees 53 minutes 07 seconds East for 284.03 feet, a central angle of 01 degree 07 minutes 28 seconds and a radius of 14,474.00 feet, for an arc distance of 284.03 feet to the end of said curve;
146. South 46 degrees 39 minutes 02 seconds East, a distance of 403.07 feet;
147. South 48 degrees 59 minutes 51 seconds East, a distance of 676.87 feet to the beginning of a non-tangent curve to the right;
148. Northeasterly, along the curve to the right which has a chord that bears North 71 degrees 42 minutes 31 seconds East for 69.47 feet, a central angle of 23 degrees 56 minutes 40 seconds and a radius of 167.43 feet, for an arc distance of 69.97 feet to an "X" set on concrete curb for the end of said curve in the northeasterly boundary of said Airport property;
149. **THENCE** South 45 degrees 32 minutes 57 seconds East, along said northeasterly Airport property boundary, the southwest boundary of Point West Addition, an

DART PARCEL NO. I3-002
PROPERTY OF CITY OF DALLAS
B. B. B. & C. RR CO. SURVEY, ABSTRACT NO. 193 ET AL
CITIES OF IRVING AND GRAPEVINE
DALLAS AND TARRANT COUNTIES, TEXAS

Page 11 of 18
June 15, 2012

addition to the City of Irving according to the plat thereof recorded in Volume 98233, Page 365 of said Deed Records, the southwest boundary of Smart Start Addition, an addition to the City of Irving according to the plat thereof recorded in Volume 2000022, Page 1712 of said Deed Records, the southwest boundary of DFW Plaza Addition, an addition to the City of Irving according to the plat thereof recorded in Volume 93231, Page 4186 of said Deed Records, and the southwest boundary of Airport Park No. 2, Second Revision, an addition to the City of Irving according to the plat thereof recorded in Volume 99099, Page 3176 of said Deed Records, passing a ½-inch steel rod found (controlling monument) for the most southerly corner of said Point West Addition at a distance of 693.00 feet, a total distance of 3118.44 feet to the beginning of a non-tangent curve to the right;

THENCE across said Airport property the following 30 courses:

150. Southeasterly, along the curve to the right which has a chord that bears South 37 degrees 49 minutes 40 seconds East for 681.13 feet, a central angle of 07 degrees 26 minutes 14 seconds and a radius of 5251.08 feet, for an arc distance of 681.61 feet to the end of said curve;
151. South 34 degrees 06 minutes 33 seconds East, a distance of 243.05 feet;
152. South 36 degrees 47 minutes 31 seconds East, a distance of 656.79 feet;
153. South 43 degrees 08 minutes 36 seconds West, a distance of 67.96 feet;
154. South 33 degrees 03 minutes 25 seconds East, a distance of 285.79 feet;
155. South 42 degrees 31 minutes 10 seconds East, a distance of 225.06 feet;
156. South 34 degrees 50 minutes 35 seconds East, a distance of 449.22 feet;
157. South 27 degrees 28 minutes 04 seconds East, a distance of 224.92 feet;
158. South 36 degrees 04 minutes 49 seconds East, a distance of 190.11 feet;
159. South 34 degrees 20 minutes 11 seconds East, a distance of 551.86 feet;
160. South 37 degrees 54 minutes 08 seconds East, a distance of 308.16 feet to the beginning of a tangent curve to the left;
161. Southeasterly, along the curve to the left which has a chord that bears South 39 degrees 31 minutes 32 seconds East for 283.29 feet, a central angle of 03 degrees 14 minutes 48 seconds and a radius of 5000.00 feet, for an arc distance of 283.33 feet to the end of said curve and the beginning of a tangent compound curve to the left;

DART PARCEL NO. I3-002
PROPERTY OF CITY OF DALLAS
B. B. B. & C. RR CO. SURVEY, ABSTRACT NO. 193 ET AL
CITIES OF IRVING AND GRAPEVINE
DALLAS AND TARRANT COUNTIES, TEXAS

162. Southeasterly, along the curve to the left which has a chord that bears South 44 degrees 54 minutes 35 seconds East for 1241.31 feet, a central angle of 07 degrees 31 minutes 18 seconds and a radius of 9462.25 feet, for an arc distance of 1242.21 feet to the end of said curve;
163. South 56 degrees 55 minutes 27 seconds East, a distance of 215.83 feet;
164. South 49 degrees 01 minute 47 seconds East, a distance of 261.19 feet;
165. South 44 degrees 01 minute 47 seconds East, a distance of 252.42 feet;
166. South 49 degrees 01 minute 47 seconds East, a distance of 59.40 feet;
167. South 54 degrees 01 minute 47 seconds East, a distance of 252.42 feet;
168. South 59 degrees 02 minutes 48 seconds East, a distance of 95.56 feet;
169. South 35 degrees 27 minutes 37 seconds East, a distance of 70.84 feet;
170. South 44 degrees 01 minute 47 seconds East, a distance of 137.68 feet;
171. South 49 degrees 01 minute 47 seconds East, a distance of 705.36 feet;
172. South 54 degrees 01 minute 47 seconds East, a distance of 167.52 feet;
173. South 49 degrees 01 minute 47 seconds East, a distance of 980.87 feet;
174. South 39 degrees 01 minute 47 seconds East, a distance of 210.77 feet;
175. South 48 degrees 50 minutes 04 seconds East, a distance of 134.38 feet;
176. South 69 degrees 01 minute 47 seconds East, a distance of 44.95 feet;
177. South 47 degrees 24 minutes 36 seconds East, a distance of 73.33 feet;
178. South 53 degrees 35 minutes 30 seconds East, a distance of 300.87 feet;
179. North 89 degrees 18 minutes 31 seconds East, a distance of 128.94 feet to a 1/2-inch steel rod with a cap marked "AZ&B" set in the east right-of-way line of said Belt Line Road;
180. **THENCE** South 00 degrees 45 minutes 19 seconds East, along the east right-of-way line of said Belt Line Road, a distance of 157.58 feet to the **POINT OF BEGINNING** and containing 2,732,773 square feet, or 62.736 acres of land, more or less.

130906

DART PARCEL NO. I3-002
PROPERTY OF CITY OF DALLAS
B. B. B. & C. RR CO. SURVEY, ABSTRACT NO. 193 ET AL
CITIES OF IRVING AND GRAPEVINE
DALLAS AND TARRANT COUNTIES, TEXAS

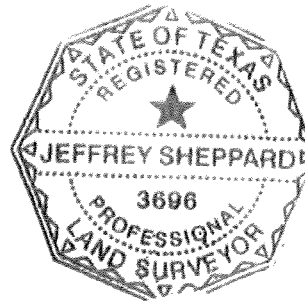
Page 13 of 18
June 15, 2012

Basis of bearings is the Texas State Plane Coordinate System, North American Datum of 1983 (NAD83), North Central Zone No. 4202, as determined by GPS observations using the WDS-VRS network. Coordinates are shown using a grid to surface scale factor of 1.000136506.

A survey plat of even date accompanies this property description.

I the undersigned, a Registered Professional Land Surveyor in the State of Texas, do hereby certify that this description and the accompanying survey plat were prepared from an actual survey made on the ground in the month of August, 2011.


Jeffrey Sheppard
Registered Professional Land Surveyor No. 3696

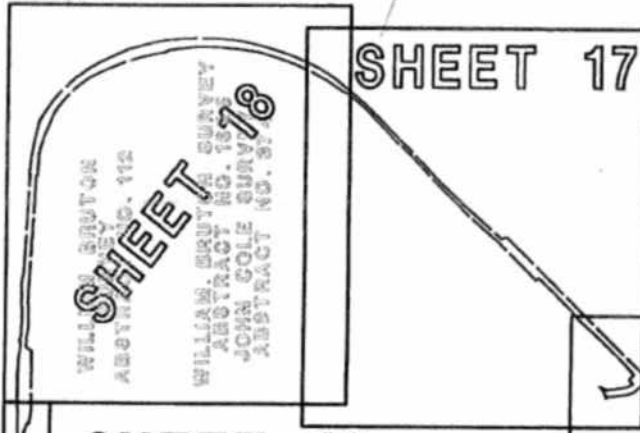


130906



SCALE = N.T.S.

SCT FORD SURVEY
ABSTRACT NO. 312
J. COWENS SURVEY
ABSTRACT NO. 1104
SCT FORD SURVEY
ABSTRACT NO. 1921
B.B.B. & C. RR. CO. SURVEY
ABSTRACT NO. 184



ELIAC BRUSH SURVEY
ABSTRACT NO. 61

JOHN BRUAM SURVEY
ABSTRACT NO. 113

B.A. & H.O. RR. CO. SURVEY
ABSTRACT NO. 1450

SHEET 16

SHEET 15

HEIRS OF
FRANCIS JONES SURVEY
ABSTRACT NO. 879

WILSON T. McLAUGHLIN SURVEY
ABSTRACT NO. 967

B.B.B. & C. RR. CO. SURVEY
ABSTRACT NO. 103



6/15/2012

PROPERTY DATA

PROPERTY OWNER(S) OF RECORD CITY OF DALLAS
STREET ADDRESS KEY INTERNATIONAL AIRPORT SURVEY
DEED VOLUME PAGE MAPSCO REF ZIA (DALLAS)
SUBDIVISION N/A
BLK. NO. N/A LOT NO. N/A

COMPUTED PMC CKD JS
DRAWN PMC CKD EDU
SUPERVISOR EDU
DATE APRIL, 2012



AREA SUMMARY

WHOLE PROPERTY SQ. FT.
FEE PERMANENT EASEMENT 2,732,773 SQ. FT.
CONSTRUCTION EASEMENT
REMAINDER (INCL. EASEMENTS)



DESIGN, SURVEY AND MAPPING
SERVED, PARAGUAY, & JAMES HARRIS

DART PROJECT



ARMEDONDO, ZEPEDA
& BERNAL, INC.
13200 WILSON ROAD
DALLAS, TX 75250
PH: 214-341-9900
FAX: 214-341-9905
www.azandb-engineers.com

DALLAS AREA RAPID TRANSIT

DART PARCEL I3-002
VICINITY MAP

SHEET 14 OF 18

DWG No. ESMT-I3-002-VIC_MAP

REV 00

8:31:53 AM

6/15/2012

S:\KSWRP\21038.013 I-3 Esmt's\Dgn\Easements\ESMT-I3-002-VIC_MAP.dgn

9 VARA

JOHN BRUAN SURVEY
ABSTRACT NO. 173

S.A. & M.G. RR. CO. SURVEY
ABSTRACT NO. 1450



NOTES:

SCALE 1"=600'

BASIS OF BEARING IS THE TEXAS COORDINATES SYSTEM OF 1983 (NAD83), AS DETERMINED BY GPS OBSERVATION USING THE WDS-VRS NETWORK. COORDINATES ARE SHOWN USING A GRID TO SURFACE SCALE FACTOR OF 1.000136506.

A PROPERTY DESCRIPTION OF EVEN DATE HERewith ACCOMPANIES THIS PLAT.

MATCH LINE
CITY OF DALLAS
VOL. 68145, PG. 1256
D.R.D.C.T.

CITY OF DALLAS
VOL. 69002, PG. 1389
TRACT II
D.R.D.C.T.

WILSON T. McLAUGHLIN SURVEY
ABSTRACT NO. 907

HEIRS OF FRANCIS
JONES SURVEY
ABSTRACT NO. 670

CITY OF DALLAS
VOL. 68183, PG. 723
D.R.D.C.T.

CITY OF DALLAS
VOL. 68195, PG. 1146
D.R.D.C.T.

CURVE TABLE					
CURVE	DELTA	RADIUS	ARC LENGTH	CHORD BEARING	CHORD
C34	07°31'18"(LT)	9,462.25'	1,242.21'	S44°54'35"E	1,241.31'

LEGEND

- CH CONTROLLING MONUMENT
- STEEL REBAR FOUND (SIZE AS NOTED)
- 1/2" STEEL REBAR SET W/ AZ88 YELLOW PLASTIC CAP (EXCEPT AS NOTED)

CITY OF DALLAS
VOL. 68211, PG. 1674
D.R.D.C.T.

B.B.B. & C. RR. CO. SURVEY
ABSTRACT NO. 193

ROLLING HILLS
RANCHITOS NO. 2
VOL. 748, PG. 1900
D.R.D.C.T.

BELT LINE ROAD
(130' R.O.V.)

GATEWAY DRIVE
(70' R.O.V.)

CITY OF DALLAS
VOL. 68084, PG. 1096
TRACT I, D.R.D.C.T.

CITY OF DALLAS
VOL. 69004, PG. 1095
TRACT II, D.R.D.C.T.

P.O.C.
5/8" SRF
W/DFV CAP
(CH)

P.O.B.
1/2" SRS
W/AZ88 CAP

1/2" SRS
W/AZ88 CAP

1/2" SRS
W/AZ88 CAP

1/2" SRS
W/AZ88 CAP

1/2" SRS
W/AZ88 CAP

1/2" SRS
W/AZ88 CAP

1/2" SRS
W/AZ88 CAP

1/2" SRS
W/AZ88 CAP

LINE TABLE		
LINE	BEARING	LENGTH
L1	S00°45'19"E	336.29'
L2	N41°11'30"W	206.41'
L3	N35°13'27"W	499.57'
L4	N48°13'42"W	378.50'
L5	N59°01'47"W	118.14'
L6	N49°01'47"W	980.87'
L7	N44°01'47"W	183.58'
L8	N49°01'47"W	689.36'
L9	N53°22'33"W	305.00'
L10	N41°41'33"W	180.98'
L11	N49°01'47"W	220.02'
L12	N59°01'47"W	161.25'
L13	N49°01'47"W	261.19'
L14	N43°17'14"W	403.41'
L15	N47°10'16"W	546.24'
L129	S56°55'27"E	215.83'
L130	S49°01'47"E	261.19'
L131	S44°01'47"E	252.42'
L132	S49°01'47"E	59.40'
L133	S54°01'47"E	252.42'
L134	S59°02'48"E	95.56'
L135	S35°27'37"E	70.84'

BLK 1 LOT 8	CITY OF DALLAS VOL. 69059, PG. 1343
BLK 1 LOT 9	CITY OF DALLAS VOL. 68168, PG. 1329
BLK 1 LOT 10	CITY OF DALLAS VOL. 69223, PG. 731
BLK 1 LOT 11	CITY OF DALLAS VOL. 70014, PG. 923
BLK 2 LOT 7	CITY OF DALLAS VOL. 69041, PG. 972
BLK 3 LOT 18	CITY OF DALLAS VOL. 69073, PG. 673
BLK 3 LOT 19	CITY OF DALLAS VOL. 69073, PG. 673
BLK 3 LOT 20	CITY OF DALLAS VOL. 69073, PG. 673
BLK 3 LOT 21	CITY OF DALLAS VOL. 69073, PG. 673
BLK 4 LOT 1	CITY OF DALLAS VOL. 69249, PG. 1487
BLK 4 LOT 2	CITY OF DALLAS VOL. 68190, PG. 1213
BLK 4 LOT 3	CITY OF DALLAS VOL. 69049, PG. 1025

LINE TABLE		
LINE	BEARING	LENGTH
L136	S44°01'47"E	137.68'
L137	S49°01'47"E	705.36'
L138	S54°01'47"E	167.52'
L139	S49°01'47"E	980.87'
L140	S39°01'47"E	210.77'
L141	S48°50'04"E	134.38'
L142	S69°01'47"E	44.95'
L143	S47°24'36"E	73.33'
L144	S53°35'30"E	300.87'
L145	N89°18'31"E	128.94'
L146	S00°45'19"E	157.58'

N 7,011,980.99
E 2,431,904.41

CITY OF DALLAS
VOL. 68145, PG. 1337
D.R.D.C.T.

BELT LINE ROAD
(120' R.O.V.)

CITY OF DALLAS
VOL. 74013, PG. 479
D.R.D.C.T.

S.A. & M.G. RR. CO. SURVEY
ABSTRACT NO. 1433



PROPERTY DATA

PROPERTY OWNER(S) OF RECORD CITY OF DALLAS
STREET ADDRESS 015 INTERNATIONAL AIRPORT SURVEY AS NOTED
DEED VOLUME AS NOTED PAGE AS NOTED MAPSCO REF 21A-E (DALLAS)
SUBDIVISION N/A
BLK. NO. N/A LOT NO. N/A

COMPUTED PNC CKD JS
DRAWN PNC CKD EDU
SUPERVISOR EDU
DATE APRIL, 2012

SCALE IN FEET
0 300 600

AREA SUMMARY

WHOLE PROPERTY 90. FT.
PER 2,732,773 SQ. FT.
CONSTRUCTION EASEMENT 162,736 AC.
REMAINDER (INCL. EASEMENTS)



DART PROJECT



AZ&B
ARREDONDO, ZEPEDA
& ASSOCIATES, INC.
11055 INCHES ROAD
DALLAS, TX 75238
PH: 214-341-9900
FAX: 214-341-9905
email: efr@az&b-inc.com

DALLAS AREA RAPID TRANSIT

DART PARCEL 13-002
R.O.W. EASEMENT

SHEET 15 OF 18 DWG No. ESMT-13-002-SH1 REV 01

130906

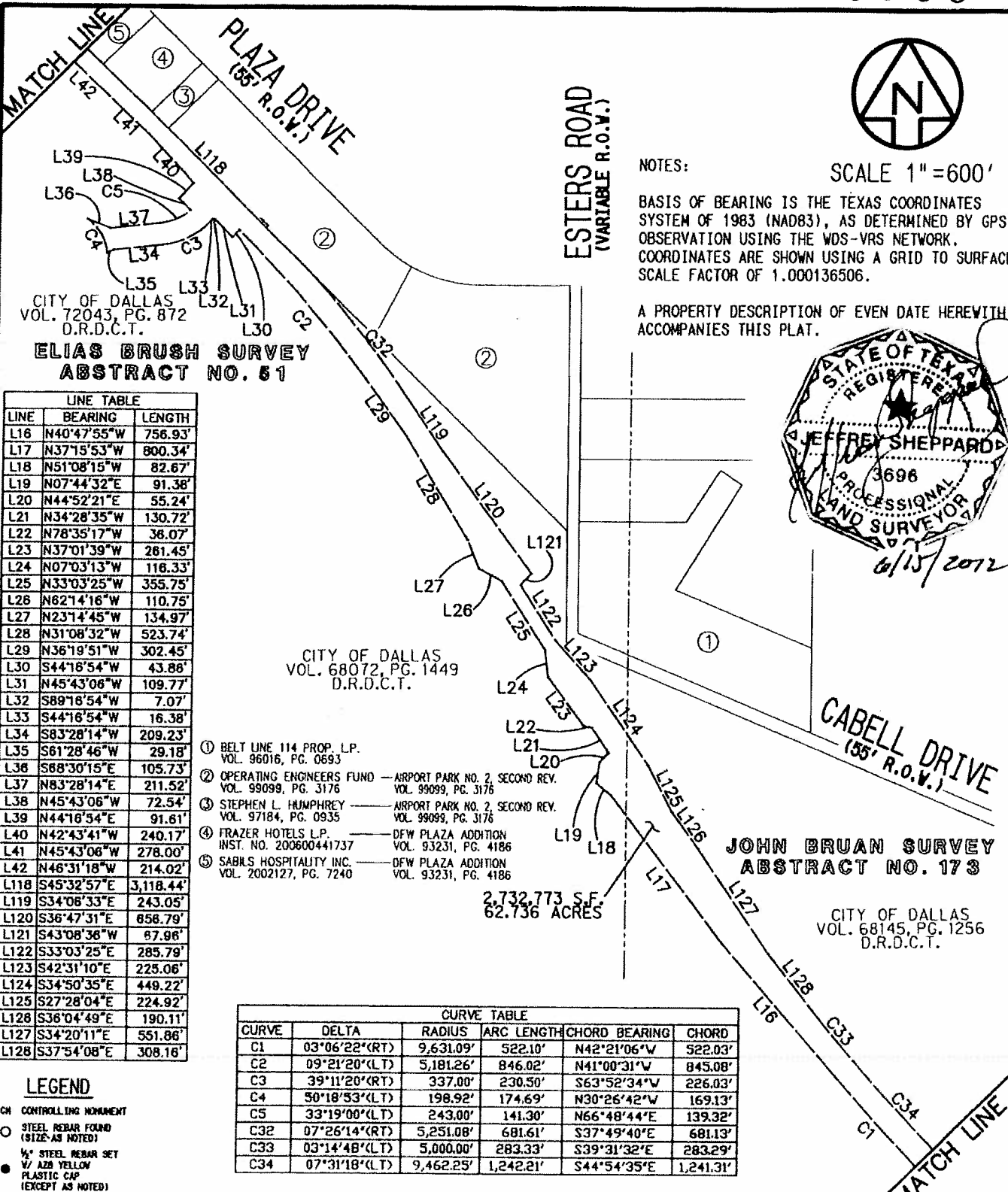
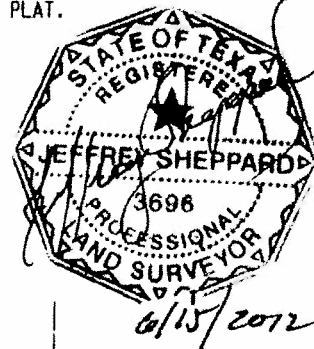


NOTES:

SCALE 1"=600'

BASIS OF BEARING IS THE TEXAS COORDINATES SYSTEM OF 1983 (NAD83), AS DETERMINED BY GPS OBSERVATION USING THE WDS-VRS NETWORK. COORDINATES ARE SHOWN USING A GRID TO SURFACE SCALE FACTOR OF 1.000136506.

A PROPERTY DESCRIPTION OF EVEN DATE HERewith ACCOMPANIES THIS PLAT.



CITY OF DALLAS
VOL. 72043, PG. 872
D.R.D.C.T.

ELIAS BRUSH SURVEY ABSTRACT NO. 51

LINE	BEARING	LENGTH
L16	N40°47'55"W	756.93'
L17	N37°15'53"W	800.34'
L18	N51°08'15"W	82.67'
L19	N07°44'32"E	91.38'
L20	N44°52'21"E	55.24'
L21	N34°28'35"W	130.72'
L22	N78°35'17"W	36.07'
L23	N37°01'39"W	261.45'
L24	N07°03'13"W	116.33'
L25	N33°03'25"W	355.75'
L26	N62°14'16"W	110.75'
L27	N23°14'45"W	134.97'
L28	N31°08'32"W	523.74'
L29	N36°19'51"W	302.45'
L30	S44°16'54"W	43.86'
L31	N45°43'06"W	109.77'
L32	S89°16'54"W	7.07'
L33	S44°16'54"W	16.38'
L34	S83°28'14"W	209.23'
L35	S61°28'46"W	29.18'
L36	S68°30'15"E	105.73'
L37	N83°28'14"E	211.52'
L38	N45°43'06"W	72.54'
L39	N44°16'54"E	91.61'
L40	N42°43'41"W	240.17'
L41	N45°43'06"W	278.00'
L42	N46°31'18"W	214.02'
L118	S45°32'57"E	3,118.44'
L119	S34°06'33"E	243.05'
L120	S36°47'31"E	658.79'
L121	S43°08'36"W	67.96'
L122	S33°03'25"E	285.79'
L123	S42°31'10"E	225.06'
L124	S34°50'35"E	449.22'
L125	S27°28'04"E	224.92'
L126	S36°04'49"E	190.11'
L127	S34°20'11"E	551.86'
L128	S37°54'08"E	308.16'

- ① BELT LINE 114 PROP. L.P.
VOL. 96016, PG. 0693
- ② OPERATING ENGINEERS FUND — AIRPORT PARK NO. 2, SECOND REV.
VOL. 99099, PG. 3176
- ③ STEPHEN L. HUMPHREY — AIRPORT PARK NO. 2, SECOND REV.
VOL. 97184, PG. 0935
- ④ FRAZER HOTELS L.P. — DFW PLAZA ADDITION
INST. NO. 200600441737 VOL. 93231, PG. 4186
- ⑤ SABLES HOSPITALITY INC. — DFW PLAZA ADDITION
VOL. 2002127, PG. 7240

2,732,773 S.F.
62.736 ACRES

CURVE	DELTA	RADIUS	ARC LENGTH	CHORD BEARING	CHORD
C1	03°06'22"(RT)	9,631.09'	522.10'	N42°21'06"W	522.03'
C2	09°21'20"(LT)	5,181.26'	846.02'	N41°00'31"W	845.08'
C3	39°11'20"(RT)	337.00'	230.50'	S63°52'34"W	226.03'
C4	50°18'53"(LT)	198.92'	174.69'	N30°26'42"W	169.13'
C5	33°19'00"(LT)	243.00'	141.30'	N66°48'44"E	139.32'
C32	07°26'14"(RT)	5,251.08'	681.61'	S37°49'40"E	681.13'
C33	03°14'48"(LT)	5,000.00'	283.33'	S39°31'32"E	283.29'
C34	07°31'18"(LT)	9,462.25'	1,242.21'	S44°54'35"E	1,241.31'

LEGEND

- CH CONTROLLING MONUMENT
- STEEL REBAR FOUND (SIZE AS NOTED)
- STEEL REBAR SET
- W/ AZB YELLOW PLASTIC CAP (EXCEPT AS NOTED)

PROPERTY DATA

PROPERTY OWNER(S) OF RECORD CITY OF DALLAS
STREET ADDRESS 001 INTERNATIONAL AIRPORT SURVEY AS NOTED
DEED VOLUME AS NOTED PAGE AS NOTED KAPSCO REF 21A-E (DALLAS)
SUBDIVISION N/A
BLK. NO. N/A LOT NO. N/A

DRAWN PNC CKD EDU

SUPERVISOR EDU

DATE APRIL, 2012

SCALE IN FEET

0 300 600

AREA SUMMARY

WHOLE PROPERTY 90. FT.
FEE PERMANENT EASEMENT 2,732,773 SQ. FT. (62.736 AC.)
CONSTRUCTION EASEMENT
REMAINDER (INCL. EASEMENTS)



ENGINE, SURVEY AND DESIGN
ADVIS: PROFESSIONAL ENGINEERING

DART PROJECT



DALLAS AREA RAPID TRANSIT

DART PARCEL I3-002 R.O.W. EASEMENT

SHEET 16 OF 18

DWG No. ESMT-I3-002-SH2

REV 01

9/11/32 AM

6/15/2012

s:\KSWRP\21038013 I-3 Esmt\Esmt\Esmt\ESMT-I3-002-SH2.dgn

VARA

130906

CITY OF DALLAS
VOL. 70123, PG. 957
VOL. 80236, PG. 1004
D.R.D.C.T.

**B.B.B. & C. RR. CO. SURVEY
ABSTRACT NO. 194**

CITY OF DALLAS
VOL. 70023, PG. 1000
D.R.D.C.T.



SCALE 1"=600'

NOTES:

BASIS OF BEARING IS THE TEXAS COORDINATES SYSTEM OF 1983 (NAD83), AS DETERMINED BY GPS OBSERVATION USING THE WDS-VRS NETWORK. COORDINATES ARE SHOWN USING A GRID TO SURFACE SCALE FACTOR OF 1.000136506.

A PROPERTY DESCRIPTION OF EVEN DATE HERewith ACCOMPANIES THIS PLAT.

JOHN CARPENTER FRWY (S.H. 114)
(VARIABLE R.O.W.)

CITY OF DALLAS
VOL. 71137, PG. 1086
TRACT 1-C
D.R.D.C.T.

CITY OF DALLAS
INST. NO. 201100340741
D.R.D.C.T.

LINE TABLE		
LINE	BEARING	LENGTH
L43	N48°03'05"W	270.22'
L44	N45°43'06"W	70.00'
L45	N40°13'05"W	135.62'
L46	N45°43'06"W	220.00'
L47	N42°12'54"W	49.09'
L48	N48°07'08"W	241.08'
L49	N54°10'37"W	88.35'
L50	S44°36'20"W	38.06'
L51	N45°04'48"W	558.43'
L52	N48°59'51"W	107.00'
L53	N41°00'09"E	10.00'
L54	N49°31'37"W	548.58'
L55	N45°21'11"W	95.14'
L56	N45°42'50"W	595.82'
L57	N43°41'39"E	6.09'
L58	N44°19'24"W	530.86'
L59	N89°19'24"W	20.11'
L60	N40°57'19"W	219.40'
L61	N46°36'50"W	66.79'
L62	N43°36'25"W	204.90'
L63	N67°01'20"W	74.29'
L112	S52°14'52"E	200.21'
L113	S50°02'41"E	208.52'
L114	S44°42'30"E	204.15'
L115	S44°19'24"E	755.41'
L116	S46°39'02"E	403.07'
L117	S48°59'51"E	676.87'
L118	S45°32'57"E	3,118.44'

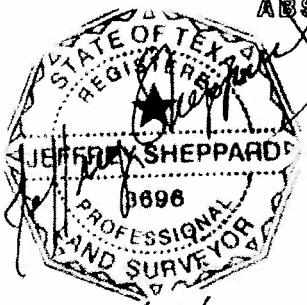
CITY OF DALLAS
VOL. 68117, PG. 1630
TRACT I
D.R.D.C.T.

2,732,773 S.F.
62.736 ACRES

- ⑤ SABILS HOSPITALITY INC.
VOL. 2002127, PG. 7240
- ⑥ PLAZA LODGING LLC
INST. NO. 20080383411
- ⑦ SMART START INC. — SMART START ADDITION
VOL. 2000029, PG. 1996 VOL. 2000022, PG. 1712
- ⑧ LAREDO SOL LLC — POINT WEST ADDITION
INST. NO. 201000125652 VOL. 98233, PG. 365
- ⑨ HARLSIA BROWN ET AL
VOL. 2002247, PG. 10572

CITY OF DALLAS
VOL. 72043, PG. 872
D.R.D.C.T.

**ELIAS BRUSH SURVEY
ABSTRACT NO. 51**



LEGEND

- CH CONTROLLING MONUMENT
- STEEL REBAR FOUND (SIZE AS NOTED)
- 1/2" STEEL REBAR SET
- 1/2" AZB YELLOW PLASTIC CAP (EXCEPT AS NOTED)

CURVE TABLE					
CURVE	DELTA	RADIUS	ARC LENGTH	CHORD BEARING	CHORD
C6	04°50'42"(LT)	1,072.84'	90.72'	N43°17'29"W	90.69'
C7	03°43'08"(LT)	2,000.00'	129.81'	N45°27'59"W	129.79'
C8	05°24'28"(LT)	3,079.00'	290.61'	N50°01'47"W	290.50'
C9	17°31'31"(LT)	3,068.54'	938.59'	N63°09'34"W	934.94'
C28	02°12'11"(RT)	1,000.00'	38.45'	S51°08'47"E	38.45'
C29	05°20'12"(RT)	3,119.00'	290.50'	S47°22'35"E	290.40'
C30	01°07'28"(LT)	14,474.00'	284.03'	S44°53'07"E	284.03'
C31	23°56'40"(RT)	167.44'	69.97'	N71°42'31"E	69.47'

PROPERTY DATA

PROPERTY OWNER(S) OF RECORD CITY OF DALLAS
STREET ADDRESS DEY INFORMATION AIRPORT SURVEY AS NOTED
DEED VOLUME AS NOTED PAGE AS NOTED MAPSCO REF 21A-E (DALLAS)
SUBDIVISION N/A
BLK. NO. LOT NO.

COMPUTED PRC CDD JS
DRAWN PRC CDD EPA
SUPERVISOR EDL
DATE APRIL, 2012

SCALE IN FEET
0 300 600

AREA SUMMARY

WHOLE PROPERTY SQ. FT.
FEE PERMANENT EASEMENT 2,732,773 SQ. FT.
CONSTRUCTION EASEMENT 62.736 AC.
REMAINDER (INCL. EASEMENTS)



ALWAYS, STAY AND WITHDRAW.
NOVEL, PARADISE, & JULES TAYLOR

DART PROJECT



DALLAS AREA RAPID TRANSIT

**DART PARCEL I3-002
R.O.W. EASEMENT**

SHEET 17 OF 18

DWG No. ESMT-I3-SH3.DGN REV 01

9/11/2012 3:33 AM

6/15/2012

s:\SWRP\21038.013 I-3 Esmt's\Ugn\Easements\ESMT-I3-002-SH3.dgn

9 VARA

130906



J. COWENS SURVEY
ABSTRACT NO. 1104

SCT FORD SURVEY
ABSTRACT NO. 1021
SCT FORD SURVEY
ABSTRACT NO. 512

CITY OF DALLAS
VOL. 70123, PG. 957
VOL. 80236, PG. 1004
D.R.D.C.T.

JOHN CARPENTER
FRWY (S.H. 114)
(VARIABLE R.O.W.)
MATCH LINE

SCALE 1"=600'

CITY OF DALLAS
VOL. 71137, PG. 1086
TRACT 1-A
D.R.D.C.T.

CITY OF DALLAS
VOL. 70023, PG. 1000
D.R.D.C.T.

WILLIAM BRUTON SURVEY
ABSTRACT NO. 112

WILLIAM BRUTON SURVEY
ABSTRACT NO. 1008

B.B. & C. RR. CO. SURVEY
ABSTRACT NO. 104
CITY OF DALLAS
VOL. 71137, PG. 1086
TRACT 1-C
D.R.D.C.T.

MATCH LINE

LINE	BEARING	LENGTH
L64	N71°55'20"W	87.27'
L65	N82°10'40"W	277.09'
L66	S82°50'25"W	202.13'
L67	S33°12'27"W	21.06'
L68	S68°41'01"W	63.74'
L69	S22°41'30"W	331.32'
L70	S15°59'22"W	214.31'
L71	S02°43'17"W	284.62'
L72	S48°04'39"W	25.31'
L73	S03°04'39"W	1,611.38'
L74	S03°45'07"E	168.10'
L75	S00°18'38"W	204.67'
L76	S12°49'23"W	94.51'
L77	S03°04'39"W	149.89'
L78	S55°39'32"E	87.74'
L79	S00°34'19"E	728.19'
L80	N86°24'46"W	23.06'
L81	S08°27'43"W	282.00'
L82	S00°33'13"E	783.15'
L83	S04°10'30"E	189.98'
L84	S89°28'47"W	15.83'
L85	S00°33'13"E	528.00'
L86	S89°28'47"W	24.83'
L87	S00°33'13"E	528.00'
L88	S89°28'47"W	17.33'
L89	N00°33'13"W	1,539.78'
L90	N10°51'30"W	22.36'
L91	N00°29'39"W	368.48'
L92	N12°39'37"E	78.09'
L93	N03°04'39"E	117.88'
L94	N88°55'21"W	19.80'
L95	N01°31'41"E	21.72'
L96	N00°47'16"E	290.63'
L97	N02°20'14"W	105.97'
L98	N00°45'48"W	283.64'
L99	N12°08'56"E	120.51'
L100	N03°04'39"E	1,266.81'
L101	N41°50'21"W	14.20'
L102	N08°12'18"E	239.19'
L103	N13°22'15"E	274.78'
L104	N54°57'50"E	79.60'
L105	N86°28'28"E	323.39'
L106	N78°39'52"E	87.05'
L107	N73°50'11"E	190.08'
L108	S79°48'41"E	117.92'
L109	S78°30'34"E	170.98'
L110	S74°33'57"E	127.24'
L111	S59°15'25"E	195.63'

CITY OF FT. WORTH
JUDGEMENT 64045
TRACT 2
D.R.T.C.T.

H. SUGGS SURVEY
ABSTRACT NO. 1414

CITY OF FT. WORTH
VOL. 4941, PG. 169
D.R.T.C.T.

2,683,787 S.F.
61.611 ACRES

CITY OF DALLAS
VOL. 71137, PG. 1086
TRACT 3-A
D.R.D.C.T.

M.H. BURNETT SURVEY
ABSTRACT NO. 158

CURVE	DELTA	RADIUS	ARC LENGTH	CHORD BEARING	CHORD
C9	17°31'31"(L.T.)	3,668.54'	938.59'	N63°09'34"W	934.94'
C10	04°10'42"(L.T.)	3,284.91'	224.90'	N74°00'41"W	224.85'
C11	09°11'33"(L.T.)	3,843.33'	488.59'	N86°54'27"W	488.07'
C12	05°39'22"(L.T.)	1,000.00'	98.72'	S85°40'06"W	98.68'
C13	02°08'15"(L.T.)	3,047.56'	106.60'	S81°50'17"W	106.60'
C14	14°30'11"(L.T.)	3,118.62'	789.41'	S73°56'07"W	787.30'
C15	35°36'34"(L.T.)	1,385.00'	860.78'	S48°52'45"W	846.99'
C16	14°59'08"(R.T.)	829.01'	216.83'	S86°55'15"W	216.21'
C17	09°49'24"(R.T.)	798.32'	136.87'	S20°00'09"W	136.70'
C18	05°25'45"(R.T.)	3,000.00'	284.27'	N02°13'13"E	284.17'
C19	36°11'32"(L.T.)	130.00'	82.12'	N18°53'02"E	80.76'
C20	07°09'57"(R.T.)	1,497.25'	187.26'	N09°47'16"E	187.14'
C21	27°03'45"(R.T.)	1,794.32'	288.05'	N60°43'09"E	287.56'
C22	11°38'38"(R.T.)	1,433.82'	288.05'	N60°43'09"E	287.56'
C23	07°26'51"(R.T.)	1,000.00'	129.98'	N77°38'36"E	129.89'
C24	15°09'00"(R.T.)	3,649.42'	964.97'	N88°56'32"E	962.17'
C25	03°39'17"(R.T.)	1,000.00'	63.79'	S81°39'20"E	63.77'
C26	11°35'42"(R.T.)	3,147.91'	637.04'	S68°46'07"E	635.99'
C27	03°42'51"(R.T.)	1,000.00'	64.82'	S61°06'50"E	64.81'

NOTES:

BASIS OF BEARING IS THE TEXAS COORDINATES SYSTEM OF 1983 (NAD83), AS DETERMINED BY GPS OBSERVATION USING THE WDS-VRS NETWORK. COORDINATES ARE SHOWN USING A GRID TO SURFACE SCALE FACTOR OF 1.000136506.

LEGEND

- CH CONTROLLING MONUMENT
 ○ STEEL REBAR FOUND (SIZE AS NOTED)
 1/4" STEEL REBAR SET
 V/ AZB YELLOW PLASTIC CAP (EXCEPT AS NOTED)

A PROPERTY DESCRIPTION OF EVEN DATE WITH ACCOMPANIES THIS PLAT.

PROPERTY DATA

PROPERTY OWNER(S) OF RECORD CITY OF DALLAS
 STREET ADDRESS DEW INTERNATIONAL AIRPORT SURVEY AS NOTED
 DEED VOLUME AS NOTED PAGE AS NOTED NADPSO REF 11V (DALLAS)
 SUBDIVISION N/A
 BLK. NO. LOT NO.

COMPUTED PHE CND JS
 DRAWN PHE CND EDU
 SUPERVISOR EDU
 DATE APRIL 2012

SCALE IN FEET
 0 300 600

AREA SUMMARY SO. FT.

WHOLE PROPERTY
 FEE PERMANENT EASEMENT 2,732,773 SQ. FT.
 CONSTRUCTION EASEMENT 162,736 AC. 1
 REMAINDER (INCL. EASEMENTS)



KLIPPT, READY AND RETURNED.
 DEVED, PARSONS, & JEFFREY

DART PROJECT



ALBUQUERQUE, ZEPEDA
 & BRUNN, INC.
 1500 AVENUE 1000
 DALLAS, TX 75201
 TEL: 214-341-9900
 FAX: 214-341-9902
 MOBILE: 214-341-9903

DALLAS AREA RAPID TRANSIT

DART PARCEL I3-002
 R.O.W. EASEMENT

SHEET 18 OF 18

DWG No. ESMT-I3-002-SH4 REV 01

9/11/35 AM

6/15/2012

I-3 Esmt's Dgn\Esmt's ESMT-I3-002-SH4.dgn

KSWAP\21038013 VARA

DART PARCEL NO. I3-002A
PROPERTY OF CITY OF DALLAS
WILLIAM BRUTON SURVEY, ABSTRACT NO. 112
CITY OF GRAPEVINE
TARRANT COUNTY, TEXAS

DESCRIPTION

BEING a 0.034 acre parcel of land situated in the DFW International Airport property in the WILLIAM BRUTON SURVEY, ABSTRACT NO. 112, in the City of Grapevine, Tarrant County, Texas, said parcel being part of a called 188.47 acre tract of land described as Tract 1-B in a deed to the City of Dallas recorded in Volume 71137, Page 1086 of the Deed Records of Dallas County, Texas, and being more particularly described as follows:

COMMENCING at the north end of the line described as Course No. 100 in the description for Parcel No. I3-002;

THENCE South 03 degrees 04 minutes 39 seconds West, along said Course No. 100, a distance of 237.55 feet to a 1/2-inch steel rod with a cap marked "AZ&B" set for the **POINT OF BEGINNING** (surface northing 7,021,658.38 and surface easting 2,417,087.38), from which a 1/2-inch steel rod (controlling monument) found for the most southerly corner of Point West Addition, an addition to the City of Irving according to the plat thereof recorded in Volume 98233, Page 365 of said Deed Records bears from said beginning point South 81 degrees 21 minutes 36 seconds East, a distance of 6791.06 feet, and a 5/8-inch steel rod with cap marked "DFW" (controlling monument) found in the east right-of-way of Belt Line Road (120' right-of-way south of this point, 130' right-of-way north of this point) for the most northerly corner of a called 18.014 acre tract of land described in a deed to the City of Dallas recorded in Volume 74013, Page 479 of said Deed Records, bears from said beginning point South 56 degrees 44 minutes 37 seconds East, a distance of 17,864.37 feet;

THENCE continuing across said Airport the following four (4) courses:

1. South 03 degrees 04 minutes 39 seconds West, continuing along said Course No. 100, a distance of 30.04 feet;
2. North 83 degrees 52 minutes 34 seconds West, a distance of 48.05 feet;
3. North 00 degrees 23 minutes 11 seconds West, a distance of 30.19 feet;
4. South 83 degrees 52 minutes 34 seconds East, a distance of 49.88 feet to the **POINT OF BEGINNING** and containing 1,469 square feet, or 0.034 acre of land, more or less.

DART PARCEL NO. I3-002A
PROPERTY OF CITY OF DALLAS
WILLIAM BRUTON SURVEY, ABSTRACT NO. 112
CITY OF GRAPEVINE
TARRANT COUNTY, TEXAS

Basis of bearings is the Texas State Plane Coordinate System, North American Datum of 1983 (NAD83), North Central Zone No. 4202, as determined by GPS observations using the WDS-VRS network. Coordinates are shown using a grid to surface scale factor of 1.000136506.

A survey plat of even date accompanies this property description.

I the undersigned, a Registered Professional Land Surveyor in the State of Texas, do hereby certify that this description and the accompanying survey plat were prepared from an actual survey made on the ground in the month of April, 2012.

 6/15/2012
Jeffrey Sheppard
Registered Professional Land Surveyor No. 3696



130906

NOTES:

BASIS OF BEARING IS THE TEXAS COORDINATES SYSTEM OF 1983 (NAD83), AS DETERMINED BY GPS OBSERVATION USING THE WDS-VRS NETWORK. COORDINATES ARE SHOWN USING A GRID TO SURFACE SCALE FACTOR OF 1.000136506.

A PROPERTY DESCRIPTION OF EVEN DATE HERewith ACCOMPANIES THIS PLAT.

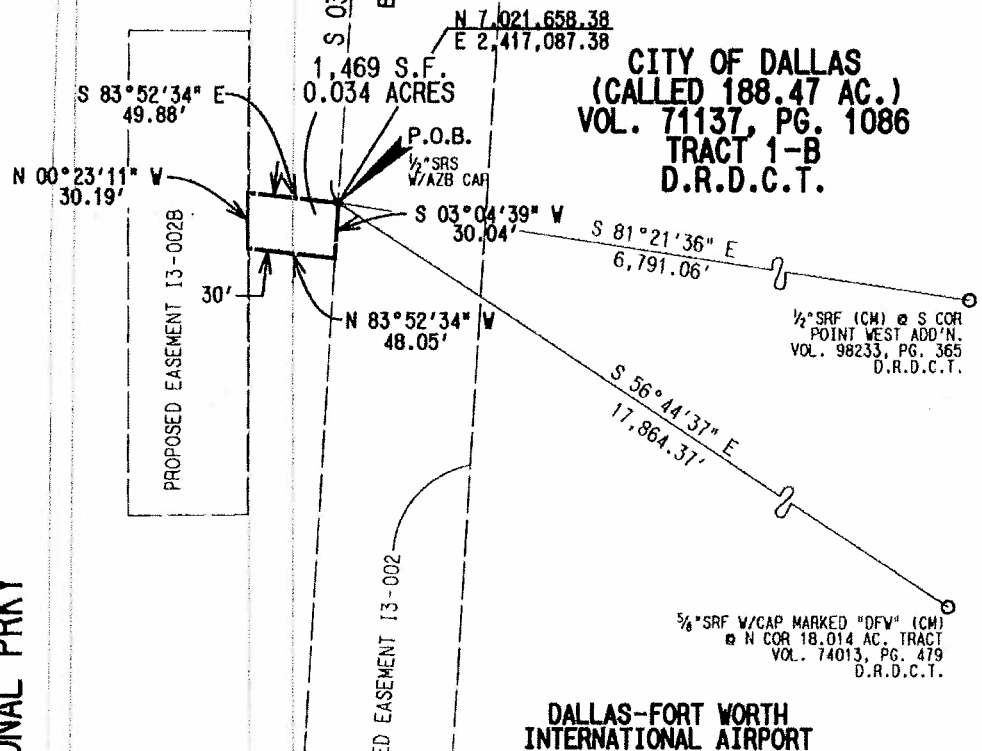


SCALE 1"=100'

WM BRUTON SURVEY
ABSTRACT NO. 112

NORTH SERVICE ROAD

WM BRUTON SURVEY
ABSTRACT NO. 112



LEGEND

- CM CONTROLLING MONUMENT
- STEEL REBAR FOUND (SIZE AS NOTED)
- 1/2" STEEL REBAR SET
- 1/2" AZB YELLOW PLASTIC CAP (EXCEPT AS NOTED)

PROPERTY DATA

PROPERTY OWNER(S) OF RECORD CITY OF DALLAS
STREET ADDRESS DEV INTERNATIONAL AIRPORT SURVEY WM BRUTON SURVEY
DEED VOLUME 71137 PAGE 1086 MAPSCO REF 28-B (FART VARTH)
SUBDIVISION N/A
BLK. NO. N/A LOT NO. N/A

COMPUTED PMC CKD JS
DRAWN PMC CKD EDU
SUPERVISOR EDU
DATE APRIL, 2012



AREA SUMMARY

WHOLE PROPERTY _____ SQ. FT.
FEE _____ PERMANENT EASEMENT 1,469 SQ. FT.
CONSTRUCTION EASEMENT _____
REMAINDER (INCL. EASEMENTS) _____



REPRINT: STACY AND WIDBEC,
REVISED: PARSONS & JEFFREY

DART PROJECT



ARREDONDO, ZEPEDA
& BRUNZ, INC.
11300 JACOB ROAD
DALLAS, TX 75244
PH: 214-341-9900
FAX: 214-341-9905
web: office@azb-inc.com

DALLAS AREA RAPID TRANSIT

DART PARCEL I3-002A
R.O.W. EASEMENT

SHEET 3 OF 3 DWG No. ESMT NO 2A.DGN REV 01

3:07:58 PM

6/14/2012

s:\KSWRP\21038013 1-3 Esmt's\Dgn\Easements\ESMT-I3-002A.dgn

VARA

DART PARCEL NO. I3-002B
PROPERTY OF CITY OF DALLAS
WILLIAM BRUTON SURVEY, ABSTRACT NO. 112
CITY OF GRAPEVINE
TARRANT COUNTY, TEXAS

DESCRIPTION

BEING a 0.393 acre parcel of land situated in the DFW International Airport property in the WILLIAM BRUTON SURVEY, ABSTRACT NO. 112, in the City of Grapevine, Tarrant County, Texas, said parcel being part of a called 188.47 acre tract of land described as Tract 1-B in a deed to the City of Dallas recorded in Volume 71137, Page 1086 of the Deed Records, of Dallas County, Texas, and being more particularly described as follows:

COMMENCING at the north end of the line described as Course No. 100 in the description for Parcel No. I3-002;

THENCE South 03 degrees 04 minutes 39 seconds West, along said Course No. 100, a distance of 237.55 feet;

THENCE North 83 degrees 52 minutes 34 seconds West, a distance of 49.88 feet;

THENCE South 00 degrees 23 minutes 11 seconds East, a distance of 173.94 feet to a 1/2-inch steel rod with a cap marked "AZ&B" set for the **POINT OF BEGINNING** (surface northing 7,021,489.77 and surface easting 2,417,038.96), from which a 1/2-inch steel rod (controlling monument) found for the most southerly corner of Point West Addition, an addition to the City of Irving according to the plat thereof recorded in Volume 98233, Page 365 of said Deed Records bears from said beginning point South 82 degrees 49 minutes 21 seconds East, a distance of 6815.82 feet, and a 5/8-inch steel rod with cap marked "DFW" (controlling monument) found in the east right-of-way of Belt Line Road (120' right-of-way south of this point, 130' right-of-way north of this point) for the most northerly corner of a called 18.014 acre tract of land described in a deed to the City of Dallas recorded in Volume 74013, Page 479 of said Deed Records, bears from said beginning point South 57 degrees 16 minutes 57 seconds East, a distance of 17,813.18 feet;

THENCE continuing across said Airport the following four (4) courses:

1. South 89 degrees 15 minutes 44 seconds West, a distance of 65.00 feet;
2. North 00 degrees 29 minutes 16 seconds West, a distance of 262.72 feet;
3. North 89 degrees 57 minutes 54 seconds East, a distance of 65.46 feet;

DART PARCEL NO. I3-002B
PROPERTY OF CITY OF DALLAS
WILLIAM BRUTON SURVEY, ABSTRACT NO. 112
CITY OF GRAPEVINE
TARRANT COUNTY, TEXAS

4. South 00 degrees 23 minutes 11 seconds East, a distance of 261.92 feet to the **POINT OF BEGINNING** and containing 17,111 square feet, or 0.393 acre of land, more or less.

Basis of bearings is the Texas State Plane Coordinate System, North American Datum of 1983 (NAD83), North Central Zone No. 4202, as determined by GPS observations using the WDS-VRS network. Coordinates are shown using a grid to surface scale factor of 1.000136506.

A survey plat of even date accompanies this property description.

I the undersigned, a Registered Professional Land Surveyor in the State of Texas, do hereby certify that this description and the accompanying survey plat were prepared from an actual survey made on the ground in the month of April, 2012.

 6/15/2012
Jeffrey Sheppard
Registered Professional Land Surveyor No. 3696



130906

NOTES:

BASIS OF BEARING IS THE TEXAS COORDINATES SYSTEM OF 1983 (NAD83), AS DETERMINED BY GPS OBSERVATION USING THE WDS-VRS NETWORK. COORDINATES ARE SHOWN USING A GRID TO SURFACE SCALE FACTOR OF 1.000136506.

A PROPERTY DESCRIPTION OF EVEN DATE HERewith ACCOMPANIES THIS PLAT.



SCALE 1"=100'

WM BRUTON SURVEY
ABSTRACT NO. 112

LEGEND

- CH CONTROLLING MONUMENT
- STEEL REBAR FOUND (SIZE AS NOTED)
- 1/2" STEEL REBAR SET
- W/ AZB YELLOW PLASTIC CAP (EXCEPT AS NOTED)

N. INTERNATIONAL PKY

NORTH SERVICE ROAD

P.O.C.

WM BRUTON SURVEY
ABSTRACT NO. 112CITY OF DALLAS
(CALC 188.47 AC.)
VOL. 71137, PG. 1086
TRACT 1-B
D.R.D.C.T.DALLAS-FORT WORTH
INTERNATIONAL AIRPORT

N 89°57'54" E 65.46'
N 00°29'16" W 262.72'
17,111 S.F.
0.393 ACRES
S 00°23'11" E 173.94'
S 89°15'44" W 65.00'
N 7,021,489.77
E 2,417,038.96

S 03°04'39" W 237.55'
COURSE NO. 100
ESMT. NO. 13-002

P.O.B.
1/2" SRS
W/AZB CAP

PROPOSED EASEMENT 13-002

S 82°49'21" E
6,815.82'

1/2" SRF (CM) @ S COR
POINT WEST ADD'N.
VOL. 98233, PG. 365
D.R.D.C.T.

S 57°16'57" E
17,813.18'

3/8" SRF W/CAP MARKED "DFW" (CM)
@ N COR 18,014 AC. TRACT
VOL. 74013, PG. 479
D.R.D.C.T.

PROPERTY DATA

PROPERTY OWNER(S) OF RECORD CITY OF DALLAS
STREET ADDRESS DFW INTERNATIONAL AIRPORT SURVEY WM BRUTON SURVEY
DEED VOLUME 71137 PAGE 1086 MAPSCO REF 28-B (Fort Worth)
SUBDIVISION N/A
BLK. NO. N/A LOT NO. N/A

COMPUTED PNC CKD JS
DRAWN PNC CKD EDU
SUPERVISOR EDU
DATE APRIL, 2012

SCALE IN FEET
0 50 100

AREA SUMMARY

WHOLE PROPERTY 99. FT.
FEE PERMANENT EASEMENT 17,111 SQ. FT.
(0.393 AC.)
CONSTRUCTION EASEMENT
REMAINDER (INCL. EASEMENTS)



CLIENT: BEAC & HITCHCOCK
DESIGN: PARSONS, a joint venture

DART PROJECT



ARREDONDO, ZEPEDA
& BERNAL, INC.
13306 INCHUR ROAD
DALLAS, TX 75248
TEL: 214-341-9900
FAX: 214-341-9901
eod - 07/06/2012 - 07/06/2012

DALLAS AREA RAPID TRANSIT

DART PARCEL 13-002B
R.O.W. EASEMENT

SHEET 3 OF 3

DWG No. ESMT NO 28.DGN

REV 01

3:07:59 PM

6/14/2012

S:\KSWHP\21038013 1-3 Esmt's\Dgn\Easements\ESMT-13-002B.dgn

VARA

DART PARCEL NO. I3-002C
PROPERTY OF CITY OF DALLAS
B.B.B. & C. RR. CO. SURVEY, ABSTRACT NO. 194
CITY OF IRVING
DALLAS COUNTY, TEXAS

DESCRIPTION

BEING a 0.0001 acre parcel of land situated in the DFW International Airport property in the B.B.B. & C. RR. CO. SURVEY, ABSTRACT NO. 194, in the City of Irving, Dallas County, Texas, said parcel being a part of a called 16.45 acre tract of land described as Tract 1-C, in a deed to the City of Dallas recorded in Volume 71137, Page 1086 of the Deed Records of Dallas County, Texas, and being more particularly described as follows:

COMMENCING at the north end of the line described as Course No. 114 in the description for Parcel No. I3-002;

THENCE South 44 degrees 42 minutes 30 seconds West, along said Course No. 114, a distance of 42.01 feet to an "X" cut on concrete set for the **POINT OF BEGINNING** (surface northing 7,022,679.35 and surface easting 2,421,594.47);

THENCE continuing across said Airport the following four (4) courses:

1. North 45 degrees 17 minutes 30 seconds East, a distance of 1.00 foot;
2. South 44 degrees 42 minutes 30 seconds East, a distance of 4.00 feet;
3. South 45 degrees 17 minutes 30 seconds West, a distance of 1.00 foot, from which a 1/2-inch steel rod (controlling monument) found for the most southerly corner of Point West Addition, an addition to the City of Irving according to the plat thereof recorded in Volume 98233, Page 365 of said Deed Records bears South 47 degrees 14 minutes 15 seconds East, a distance of 3,002.13 feet, and a 5/8-inch steel rod with cap marked "DFW" (controlling monument) found in the east right-of-way of Belt Line Road (120' right-of-way south of this point, 130' right-of-way north of this point) for the most northerly corner of a called 18.014 acre tract of land described in a deed to the City of Dallas recorded in Volume 74013, Page 479 of said Deed Records, bears South 43 degrees 57 minutes 32 seconds East, a distance of 15,023.85 feet
4. North 44 degrees 42 minutes 30 seconds West, a distance of 4.00 feet to the **POINT OF BEGINNING** and containing 4 square feet, or 0.0001 acre of land, more or less.

DART PARCEL NO. I3-002C
PROPERTY OF CITY OF DALLAS
B.B.B. & C. RR. CO. SURVEY, ABSTRACT NO. 194
CITY OF IRVING
DALLAS COUNTY, TEXAS

Basis of bearings is the Texas State Plane Coordinate System, North American Datum of 1983 (NAD83), North Central Zone No. 4202, as determined by GPS observations using the WDS-VRS network. Coordinates are shown using a grid to surface scale factor of 1.000136506.

A survey plat of even date accompanies this property description.

I the undersigned, a Registered Professional Land Surveyor in the State of Texas, do hereby certify that this description and the accompanying survey plat were prepared from an actual survey made on the ground in the month of June, 2012.


Jeffrey Sheppard
Registered Professional Land Surveyor No. 3696



130906

NOTES:

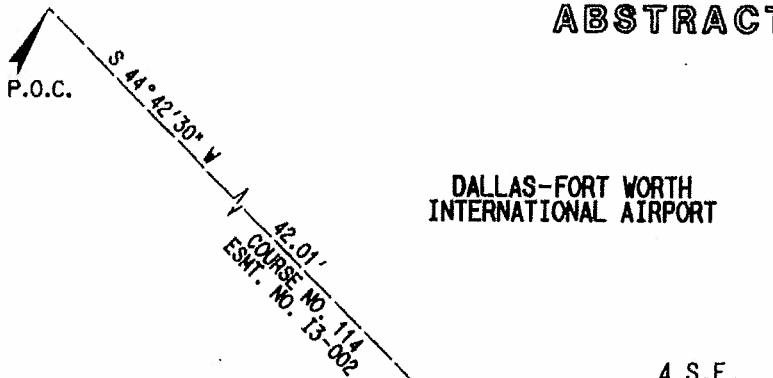
BASIS OF BEARING IS THE TEXAS COORDINATES SYSTEM OF 1983 (NAD83), AS DETERMINED BY GPS OBSERVATION USING THE WDS-VRS NETWORK. COORDINATES ARE SHOWN USING A GRID TO SURFACE SCALE FACTOR OF 1.000136506.

A PROPERTY DESCRIPTION OF EVEN DATE HERewith ACCOMPANIES THIS PLAT.



SCALE 1"=5'

B.B.B. & C. RR. CO. SURVEY ABSTRACT NO. 194



LINE TABLE		
LINE	BEARING	DISTANCE
L1	N45°17'30"E	1.00'
L2	S44°42'30"E	4.00'
L3	S45°17'30"W	1.00'
L4	N44°42'30"W	4.00'

DALLAS-FORT WORTH
INTERNATIONAL AIRPORT

P.O.B.
"X" CUT SET
ON CONCRETE

N 7,022,679.35
E 2,421,594.47

CITY OF DALLAS
(CALLED 16.45 ACRES)
VOL. 71137, PG. 1086
TRACT 1-C
D.R.D.C.T.



LEGEND

- CH CONTROLLING MONUMENT
- STEEL REBAR FOUND (SIZE AS NOTED)
- 1/2" STEEL REBAR SET
- 1/2" AZB YELLOW PLASTIC CAP (EXCEPT AS NOTED)

PROPERTY DATA

PROPERTY OWNER(S) OF RECORD CITY OF DALLAS
STREET ADDRESS DEY INTERNATIONAL AIRPORT SURVEY B.B.B. & C. RR. CO. SURVEY
DEED VOLUME 71137 PAGE 1086 MAPSCO REF 21A-E (Dallas)
SUBDIVISION N/A LOT NO. N/A

COMPUTED BY RHE CKD JR
DRAWN BY RHE CKD EDU
SUPERVISOR EDU
DATE JUNE 18, 2012

SCALE IN FEET
0 2.5 1

AREA SUMMARY

WHOLE PROPERTY
FEE PERMANENT EASEMENT (0.0001 AC.)
CONSTRUCTION EASEMENT
REMAINDER (INCL. EASEMENTS)



CLIENT, DESIGN AND CONSTRUCTION.
DESIGN, PREPARED, & FIELD SURVEY.

DART PROJECT



AZ&B
ARREDONDO, ZEPEDA
& ASSOCIATES, INC.
10000 NORTH TEXAS
DALLAS, TX 75243
PH: 214-341-9900
FAX: 214-341-9900
www.azandb.com

DALLAS AREA RAPID TRANSIT

DART PARCEL I3-002C DRAINAGE EASEMENT

SHEET 3 OF 3

DWG No. ESMT NO 2C.DGN

REV 00

S:\KSWRP\21038013 1-3 Esmt\Drawings\ESMT-13-002C.dgn

V.A.R.A.

DART PARCEL NO. I3-001
PROPERTY OF CITY OF DALLAS
S. A. & M. G. R.R. CO. SURVEY, ABSTRACT NO. 1433
CITY OF IRVING
DALLAS COUNTY, TEXAS

DESCRIPTION

BEING a 4.438 acre parcel of land situated in the DFW International Airport property in the S. A. & M. G. R.R. CO. SURVEY, ABSTRACT NO. 1433, in the City of Irving, Dallas County, Texas, said parcel being a part of a called 18.014 acre tract of land described in a deed to the City of Dallas recorded in Volume 74013, Page 479 of the Deed Records of Dallas County, Texas, and being more particularly described as follows:

BEGINNING at a 5/8-inch steel rod with cap marked "DFW" (controlling monument) found in the east right-of-way of Belt Line Road (120' right-of-way south of this point, 130' right-of-way north of this point) for the most northerly corner of said 18.014 acre tract (surface northing 7,011,861.76 and surface easting 2,432,026.02);

1. **THENCE** South 45 degrees 33 minutes 54 seconds East, along the southwest line and its prolongation of Las Colinas Business Park, Sixteenth Installment, an addition to the City of Irving according to the plat thereof recorded as Instrument No. 200503531024 of the Official Public Records of Dallas County, Texas, and along the southwest line of Las Colinas Business Park, Fifth Installment, an addition to the City of Irving according to the plat thereof recorded in Volume 96249, Page 3625 of said Deed Records, a distance of 232.39 feet;

THENCE across said 18.014 acre tract the following ten (10) courses and distances:

2. South 39 degrees 04 minutes 11 seconds East, a distance of 268.51 feet;
3. South 34 degrees 55 minutes 23 seconds East, a distance of 290.56 feet;
4. South 37 degrees 07 minutes 43 seconds East, a distance of 308.92 feet;
5. South 46 degrees 49 minutes 26 seconds East, a distance of 103.17 feet;
6. South 43 degrees 10 minutes 34 seconds West, a distance of 94.11 feet;
7. North 46 degrees 49 minutes 26 seconds West, a distance of 200.46 feet;
8. North 49 degrees 29 minutes 29 seconds West, a distance of 218.67 feet;
9. North 49 degrees 17 minutes 51 seconds West, a distance of 226.79 feet;

DART PARCEL NO. I3-001
PROPERTY OF CITY OF DALLAS
S. A. & M. G. R.R. CO. SURVEY, ABSTRACT NO. 1433
CITY OF IRVING
DALLAS COUNTY, TEXAS

DESCRIPTION

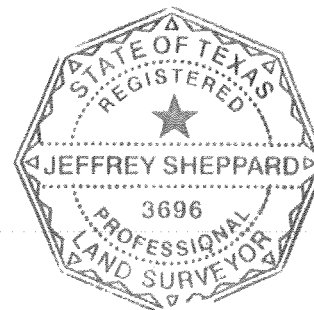
10. North 46 degrees 51 minutes 20 seconds West, a distance of 187.68 feet;
11. North 41 degrees 11 minutes 30 seconds West, a distance of 110.47 feet to a 1/2-inch steel rod with a cap marked "AZ&B" set in the east right-of-way of Belt Line Road (120' right-of-way at this point);
12. **THENCE** North 00 degrees 45 minutes 55 seconds West, along said east right-of-way, a distance of 356.38 feet the **POINT OF BEGINNING** and containing 193,322 square feet, or 4.438 acres of land, more or less.

Basis of bearings is the Texas State Plane Coordinate System, North American Datum of 1983 (NAD83), North Central Zone No. 4202, as determined by GPS observations using the WDS-VRS network. Coordinates are shown using a grid to surface scale factor of 1.000136506.

A survey plat of even date accompanies this property description.

I the undersigned, a Registered Professional Land Surveyor in the State of Texas, do hereby certify that this description and the accompanying survey plat were prepared from an actual survey made on the ground in the month of April, 2012.


Jeffrey Sheppard
Registered Professional Land Surveyor No. 3696

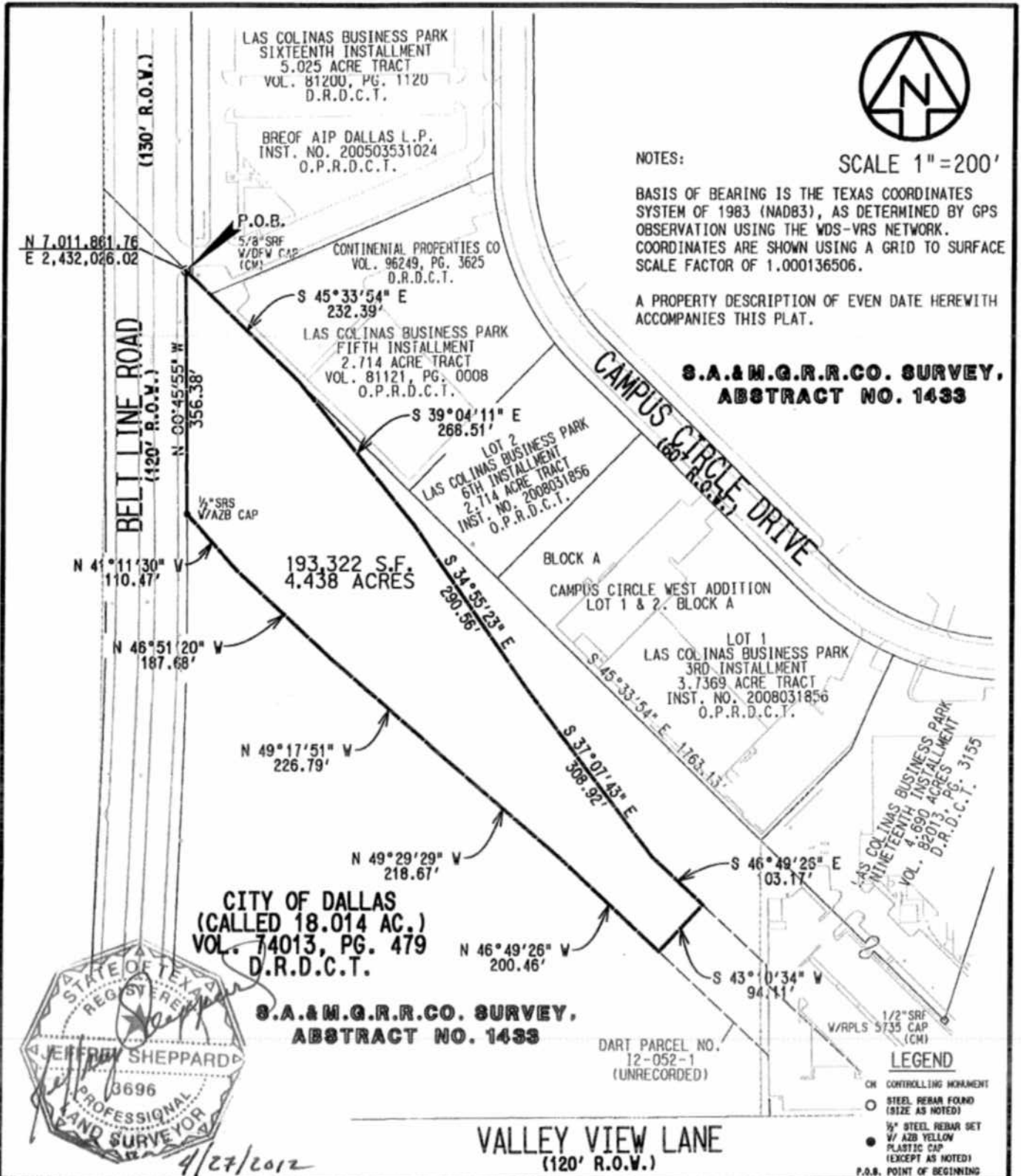


1:55:43 PM

4/27/2012

S:\KSWRP\21038.DWG 1-3 Esmt\VDgn\Easements\ESMT-13-001.dgn

VARA



PROPERTY DATA PROPERTY OWNER(S) OF RECORD: CITY OF DALLAS STREET ADDRESS: 817 INTERNATIONAL AIRPORT DEED VOLUME: 74013 PAGE: 479 SUBDIVISION: N/A BLK. NO.: N/A LOT NO.: N/A		COMPUTED: PNC CKD JS DRAWN: PNC CKD JS SUPERVISOR: EBN DATE: APRIL, 2012 SCALE IN FEET: 0 100 200		AREA SUMMARY AREA: 193,322 SQ. FT. PERMANENT EASEMENT: 14,138 AC. CONSTRUCTION EASEMENT: _____ REMAINDER (INCL. EASEMENTS): _____	
DART PROJECT 		AZ&B ARREDONDO, ZEPEDA & BERNIZ, INC. 11305 MACHER ROAD DALLAS, TX 75248 PH: 214-341-9900 FAX: 214-341-9905 email: azb@azb-bnrga.com		DALLAS AREA RAPID TRANSIT DART PARCEL I3-001 R.O.W. EASEMENT SHEET 3 OF 3 DWG No. ESMT-13-001 REV 00	

DART PARCEL NO. I3-002D
PROPERTY OF CITY OF DALLAS
ELIAS BRUSH SURVEY, ABSTRACT NO. 51
CITY OF IRVING
DALLAS COUNTY, TEXAS

DESCRIPTION

BEING a 0.016 acre parcel of land situated in the DFW International Airport property in the ELIAS BRUSH SURVEY, ABSTRACT NO. 51, in the City of Irving, Dallas County, Texas, said parcel being a part of a called 145.80 acre tract of land described as Tract I, in a deed to the City of Dallas recorded in Volume 68117, Page 1630 of the Deed Records of Dallas County, Texas, and being more particularly described as follows:

COMMENCING at the south end of the line described as Course No. 144 in the description for Parcel No. I3-002;

THENCE North 44 degrees 19 minutes 24 seconds West, along said Course No. 144, a distance of 398.29 feet;

THENCE North 45 degrees 40 minutes 36 seconds East, a distance of 8.88 feet to a 1/2-inch steel rod with a cap marked "AZ&B" set for the **POINT OF BEGINNING** (surface northing 7,022,314.83 and surface easting 2,421,964.42), from which a 1/2-inch steel rod (controlling monument) found for the most southerly corner of Point West Addition, an addition to the City of Irving according to the plat thereof recorded in Volume 98233, Page 365 of said Deed Records bears from said beginning point South 47 degrees 36 minutes 43 seconds East, a distance of 2,487.08 feet, and a 5/8-inch steel rod with cap marked "DFW" (controlling monument) found in the east right-of-way of Belt Line Road (120' right-of-way south of this point, 130' right-of-way north of this point) for the most northerly corner of a called 18.014 acre tract of land described in a deed to the City of Dallas recorded in Volume 74013, Page 479 of said Deed Records, bears from said beginning point South 43 degrees 54 minutes 24 seconds East, a distance of 14,508.67 feet;

THENCE continuing across said Airport the following four (6) courses:

1. North 43 degrees 07 minutes 47 seconds East, a distance of 4.51 feet;
2. North 44 degrees 09 minutes 52 seconds East, a distance of 106.97 feet;
3. South 75 degrees 50 minutes 08 seconds East, a distance of 52.12 feet;
4. South 14 degrees 09 minutes 52 seconds West, a distance of 4.50 feet;
5. North 75 degrees 50 minutes 08 seconds West, a distance of 49.53 feet;

DART PARCEL NO. I3-002D
PROPERTY OF CITY OF DALLAS
ELIAS BRUSH SURVEY, ABSTRACT NO. 51
CITY OF IRVING
DALLAS COUNTY, TEXAS

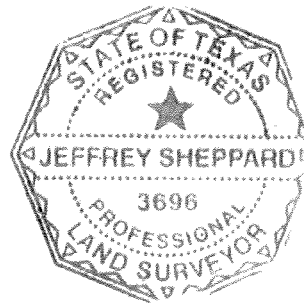
6. South 44 degrees 09 minutes 52 seconds West, a distance of 104.58 feet to the **POINT OF BEGINNING** and containing 705 square feet, or 0.016 acre of land, more or less.

Basis of bearings is the Texas State Plane Coordinate System, North American Datum of 1983 (NAD83), North Central Zone No. 4202, as determined by GPS observations using the WDS-VRS network. Coordinates are shown using a grid to surface scale factor of 1.000136506.

A survey plat of even date accompanies this property description.

I the undersigned, a Registered Professional Land Surveyor in the State of Texas, do hereby certify that this description and the accompanying survey plat were prepared from an actual survey made on the ground in the month of June, 2012.


Jeffrey Sheppard
Registered Professional Land Surveyor No. 3696



130906

NOTES:

BASIS OF BEARING IS THE TEXAS COORDINATES SYSTEM OF 1983 (NAD83), AS DETERMINED BY GPS OBSERVATION USING THE WDS-VRS NETWORK. COORDINATES ARE SHOWN USING A GRID TO SURFACE SCALE FACTOR OF 1.000136506.

A PROPERTY DESCRIPTION OF EVEN DATE HERewith ACCOMPANIES THIS PLAT.



SCALE 1"=40'

ELIAS BRUSH SURVEY ABSTRACT NO. 51

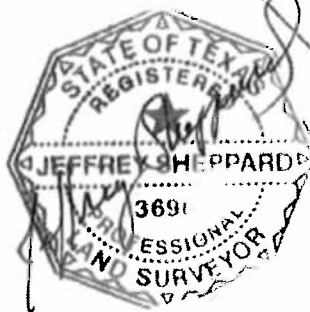
JOHN CARPENTER FRWY (S.H.114)
(VARIABLE R.O.W.)

705 S.F.
0.016 ACRE

CITY OF DALLAS
(CALLED 145.80 ACRES)
VOL. 68117, PG. 1630
TRACT I
D.R.D.C.T.

DALLAS-FORT WORTH
INTERNATIONAL AIRPORT

LINE TABLE		
LINE	BEARING	DISTANCE
L1	N43°07'47"W	4.51'
L2	N44°09'52"E	106.97'
L3	S75°50'08"E	52.12'
L4	S14°09'52"W	4.50'
L5	N75°50'08"W	49.53'
L6	S44°09'52"W	104.58'



6/18/2012

LEGEND

- CM CONTROLLING MONUMENT
- STEEL REBAR FOUND (SIZE AS NOTED)
- 1/2" STEEL REBAR SET
- ✓ AZB YELLOW PLASTIC CAP (EXCEPT AS NOTED)

DALLAS-FORT WORTH
INTERNATIONAL AIRPORT

PROPERTY DATA

PROPERTY OWNER(S) OF RECORD CITY OF DALLAS
STREET ADDRESS DFW INTERNATIONAL AIRPORT SURVEY ELIAS BRUSH SURVEY
DEED VOLUME 68117 PAGE 1630 MAPSCO REF 21A-E (Dallas)
SUBDIVISION N/A
BLK. NO. N/A LOT NO. N/A

COMPUTED JHE CKD JS
DRAWN JHE CKD EDU
SUPERVISOR EDU
DATE JUNE 18, 2012

SCALE IN FEET
0 20 40

AREA SUMMARY

AREA 90. FT.
WHOLE PROPERTY
FEE PERMANENT EASEMENT 705 SQ. FT. (0.016 AC.)
CONSTRUCTION EASEMENT
REMAINDER (INCL. EASEMENTS)



CLERK, STACY AND WITNESS
BY: PARSONS & JAMES BARTON

DART PROJECT



ALFREDO, ZEPEDA
B. BRANZ, INC.
10000 WOODHURST ROAD
DALLAS, TX 75224
TEL: 214-341-9900
FAX: 214-341-9905

DALLAS AREA RAPID TRANSIT

DART PARCEL 13-002D DRAINAGE EASEMENT

SHEET 3 OF 3

DWG No. ESMT NO 2D.DGN

REV 00

S:\KSWRP\211038.D13 1-3 Esmts\Dgn\Easements\ESMT-13-002D.dgn

VARA